

Dreweatts¹⁷⁵⁹

DONNINGTON PRIORY

FURNITURE, WORKS OF ART, RUGS AND CARPETS

Wednesday 26th January 2011



Dreweatts¹⁷⁵⁹



BLOOMSBURY AUCTIONS

MANAGEMENT BOARD

Stephan Ludwig Executive Chairman
Clive Stewart-Lockhart Deputy Chairman
Rupert Powell Deputy Chairman
Peter Floyd Finance Director

Liz Peck Chief Operating Officer
Fabio Massimo Bertolo
Alexander Hayter

James Nicholson
Richard Madley
William Richards

INTERNATIONAL DEPARTMENTS

DREWEATTS DONNINGTON PRIORY

Donnington, Berkshire, RG14 2JE
Tel: +44 (0) 1635 553 553
Fax: +44 (0) 1635 553 599
donnington@dnfa.com
www.dnfa.com/donnington

ASIAN CERAMICS & WORKS OF ART

Dan Bray Associate Director
Clive Stewart-Lockhart Deputy Chairman

CLOCKS & SCIENTIFIC INSTRUMENTS

Leighton Gillibrand Director

COUNTRY SPORTING

Geoffrey Stafford Charles Director
Charlie Murphy Specialist

DECORATIVE ARTS

David Rees Director

ENGLISH & CONTINENTAL CERAMICS

Geoffrey Stafford Charles Director

FURNITURE

Cristian Beadman Associate Director,
Furniture & Works of Art
Ben Millerchip-Brown Associate Director,
Furniture & Carpets
Emma Terry Specialist

JEWELLERY, SILVER, WATCHES & OBJECTS OF VERTU

James Nicholson International Head of Department
David Rees Director, Silver & Objects of Vertu
Ian Pickford Silver Consultant
Beth West Specialist

PICTURES

Clive Stewart-Lockhart Deputy Chairman
James James-Crook Director
Archie Parker Specialist

WINE

Bruce Cairnduff (Consultant)
Charlie Murphy Specialist

ADMINISTRATION

Brenda Adams Associate Director, Client Accounts
Helen Barnard Administrator
Tori Billington Marketing Assistant
Kathy James Administrator
Rita Lauer Saleroom Assistant
Nick Mann Saleroom Assistant
Adam Martin Saleroom Assistant
Matthew Martin Photography Assistant
Dave Pincott Photographer
Ruth Rackham Senior Administrator
& Valuations Coordinator
Gyula Sirok Saleroom Assistant

DREWEATTS BRISTOL

St. John's Place
Apsley Road, Clifton
Bristol BS8 2ST
Tel: +44 (0) 117 973 7201
Fax: +44 (0) 117 973 5671
bristol@dnfa.com
www.dnfa.com/bristol

CLOCKS & SCIENTIFIC INSTRUMENTS

Leighton Gillibrand Director

FURNITURE & ORIENTAL CARPETS

Richard Madley Director

MEDALS & MILITARIA

Malcolm Claridge Specialist

PICTURES

Mary McCarthy Urban Art & Contemporary Art

SILVER & JEWELLERY

John Kelly Specialist

STEAM MODEL ENGINEERING

Michael Matthews Specialist (Consultant)

TOYS, COLLECTABLES, RAILWAYANA & BOOKS

Peter Rixon Associate Director

ADMINISTRATION

Kate Hannah Administrator
Sara Lucas Saleroom Assistant
Sara Martineau Photographer
Eve Karbowski Photographer

BLOOMSBURY AUCTIONS LONDON

Bloomsbury House
24 Maddox Street
London, W1S 1PP
Tel: +44 (0) 20 7495 9494
Fax: +44 (0) 20 7495 9499
info@bloombsburyauctions.com
www.bloombsburyauctions.com

BOOKS & MANUSCRIPTS

Rupert Powell Deputy Chairman
Dido Arthur Senior Book Specialist
John Collins (Consultant) Book Specialist
Michael Heseltine (Consultant) Book Specialist
Hannah Usher Book Specialist
Simon Luterbacher Manuscripts Specialist
Clive Moss Book Specialist
Roddy Newlands Modern First Editions Specialist
Justin Phillips Continental Specialist

PICTURES AND MAPS

Robert Hall Senior Specialist

MODERN & CONTEMPORARY ART & PRINTS

Alexander Hayter International Head of
Contemporary Art
Mary McCarthy Urban & Contemporary Art

PHOTOGRAPHS

Sarah Wheeler Specialist
John Cumming (Consultant)

POSTERS

Richard Barclay (Consultant)

MARKETING

Richard Caton Group Head of Marketing
Poppy Walker Marketing Assistant

ADMINISTRATION

Graham Argue Saleroom Assistant
Abbie Barker Reception
Robert Cain Saleroom Assistant
Steve Cain Saleroom Manager
Scott Harvey Art Director
Craig Millar IT
Julia Owen Accounts
Elio Stolz Photography
Kate Todd Administrator
Emma Traill Reception

BLOOMSBURY AUCTIONS ROME

Palazzo Colonna
Via della Pilotta 19
00187, Roma
Tel: +39 06 679 1107
Fax: +39 06 699 23077
rome@bloombsburyauctions.com
www.bloombsburyauctions.com

BOOKS & MANUSCRIPTS

Fabio Massimo Bertolo Head of Department,
Auction Manager
Silvia Ferrini Senior Book Specialist & Office Manager

19TH & 20TH CENTURY ART

Luca Santori Head of Department

OLD MASTER PAINTINGS

Valentina Ciancio Head of Department
Adele Coggiola Junior Specialist / Administrator

JEWELS, WATCHES AND SILVER

Andrea Ansuini Head of Department
Claudia Pozzati Administrator

PHOTOGRAPHS

Silvia Berselli (Consultant)
Marica Rossetti Administrator

ADMINISTRATION

Debora Bifulco Accounts
Viola Marzoli Marketing
Claudio Vennarini Saleroom Manager,
Packaging and Shipping



Dreweatts¹⁷⁵⁹

DONNINGTON PRIORY

FURNITURE
WORKS OF ART
RUGS AND CARPETS

Wednesday 26th January 2011, 10am

IMPORTANT NOTICES

Please see Conditions of Business and Conditions of Sale at the back of this catalogue

Buying at Dreweatts

There are several ways you can bid at a Dreweatts auction; in person, by leaving a commission or absentee bid, on the telephone where available and live via the internet – please make arrangements before the sale.

Bidding in Person

If intending to buy you are required to register your name and details at reception prior to the commencement of the auction. You will then be allocated a bidding number, which you use when bidding for an item.

Commission Bids

Dreweatts will execute bids on your behalf if you are unable to attend the sale. Commission or absentee bids are accepted either directly at reception, or can be sent by post, fax, email, telephone or via the website: www.dnfa.com.

Dreweatts will add these bids to the auctioneers' sale book and will undertake to purchase the lots on your behalf as cheaply as allowed by other bids and reserves.

Dreweatts does not accept liability for failing to execute commission bids, or for any errors or omissions.

Condition

Bidders must satisfy themselves as to the condition of each lot. Condition reports are available on request – see the Conditions of Business at the back of this catalogue for more information regarding condition reports. Requests for condition reports must be submitted by 4pm on the day prior to the auction.

Commission Charges

All purchases are subject to a buyer's premium, which is 22% of the hammer price plus VAT on this 22% (26.4% including VAT), for items up to £250,000. The commission reduces to 12% (14.40% including VAT) on the balance of items with a hammer price of £250,001 and over.

In the event that a lot has an asterisk (*) beside the lot number in the catalogue, this indicates that the item is owned by an entity or company required to pay VAT (generally not an Antique Dealer, as they operate under a dealer's margin scheme). VAT is payable at 20% on the hammer price.

Live Internet Bidding

To register to bid live via the Internet or to follow the sale go to either www.the-saleroom.com or www.invaluable.com. Please note there is a 3% surcharge for purchases made through Invaluable.com. Dreweatts does not accept liability for any failure of these services

Payment

Payment will be accepted, if you are a successful bidder, by debit card issued by a UK bank, in cash (subject to relevant money laundering regulations), by bank transfer or by all major UK issued credit cards with the exception of American Express and Diners Club. A surcharge of 3% is payable on all payments made by credit card. This surcharge does not apply to debit card payments. Payment may also be made by Sterling personal cheques drawn on a UK bank account but Dreweatts regrets that purchases paid for by this method can not be collected until your cheque has cleared.

Bidding Increments

The Auctioneer will advance bids in the following preset increments, and is under no obligation to accept bids between these increments.

£200	£220	£240	£260...	£300
£320	£350	£380	£400...	£500
£550	£600	£650	£700...	£1000
£1100	£1200	£1300	£1400...	£2000
£2200	£2400	£2600	£2800...	£3000
£3200	£3500	£3800	£4000...	£5000
£5500	£6000	£6500	£7000...	£10000
£11000	£12000	£13000	£14000...	£20000
£22000	£24000	£26000	£28000...	£30000
£32000	£35000	£38000	£40000...	£50000
£55000	£60000	£65000	£70000...	£100000
£110000	£120000	£130000	£140000...	£200000
£220000	£240000	£260000	£280000...	£300000
£320000	£350000	£380000	£400000...	£500000

Collection or Delivery

Before being able to collect your purchases you are required to pay the hammer price, plus the applicable commissions, and obtain a receipt acknowledging payment. Collection of the purchased lots is at the purchaser's risk and expense and whilst Dreweatts do not provide packing and despatch service we can suggest some carriers.

Dreweatts also require that all purchased items are collected within three days of the sale to avoid a storage charge being applied.

Storage Charges

All items of furniture and larger works of art not collected by 5.30pm on the Tuesday of the week following the sale will be automatically removed to commercial storage and subject to a minimum storage charge of £20 (plus VAT) per consignment and to a further storage charge of £2 (plus VAT) per lot per part or full day thereafter. These charges will be the sole liability of the purchaser and will be billed directly to them by Rem/Stor uk Ltd.

On payment of all sales and storage costs, items will be available for collection by appointment from Rem/Stor uk Ltd, tel: 01249 446020.

These charges are set by Rem/Store uk Ltd, we recommend that you contact them directly regarding queries relating to these charges and other questions relating to storage. Staff at the saleroom will be unable to answer questions relating to items that have been removed from the saleroom.

Further Information

The colours printed in this catalogue are not necessarily a true reflection of the actual item.

All weights and measures given in the catalogue should be regarded as approximate.

Valuation Services

Dreweatts provides a range of confidential and professional valuation services to private clients, solicitors, executors, estate managers, trustees and other professional partners. These services include auction valuations, insurance valuations, probate valuations, private treaty valuations, valuations for family division or for tax purposes. For more information, please see our website: www.dnfa.com.

For directions to Donnington Priory, please see our website: www.dnfa.com

Parking is available at Donnington Priory in two car parks on either side of the saleroom.



Dreweatts¹⁷⁵⁹

DONNINGTON PRIORY

FURNITURE, WORKS OF ART, RUGS AND CARPETS

Wednesday 26th January 2011, 10am

Sale No. 13375

Specialists

Cristian Beadman
cbeadman@dnfa.com

Ben Millerchip-Brown
bmbrown@dnfa.com

Emma Terry
eterry@dnfa.com

Viewing

Saturday 22nd January 2011
9.00 a.m. - 12.30 p.m.

Monday 24th January 2011
9.00 a.m. - 6.00 p.m.

Tuesday 25th January 2011
9.00 a.m. - 5.30 p.m.

Day of sale from 8.30 a.m.

Catalogues £10 (£12, \$22, €18 by post)

Online bidding for this sale:

www.the-saleroom.com

www.invaluable.com



There is no surcharge
for using this service

There is a 3% surcharge
for using this service

Visit our website for current catalogues, colour illustrations
of major lots and a word search service: www.dnfa.com

Buyer's premium is charged per lot at 22% plus VAT (26.4%)
of the hammer price up to £250,000, and 12% plus VAT
(14.40%) on the hammer price in excess of £250,000

Dreweatts

Donnington Priory Salerooms
Newbury, Berkshire RG14 2JE
Tel: +44 (0)1635 553553
Fax: +44 (0)1635 553599
donnington@dnfa.com

www.dnfa.com



Dreweatts¹⁷⁵⁹

GARDEN FURNITURE
AND WORKS OF ART

at 10am



1

1
 A copper weather vane modelled as a cockerel, circa 1900, repousse worked in the round, portrayed standing on an arrow, above the Cardinal Points and a spherical boss, 80cm high, 60cm wide
 £300-500



2

2
 A pair of painted cast iron urns, late 19th century, simulating terracotta, each of flared form with lobed rim, the body cast with acanthus, on a waisted stem and cylindrical plinth, 74cm high, 58cm diameter
 £600-800



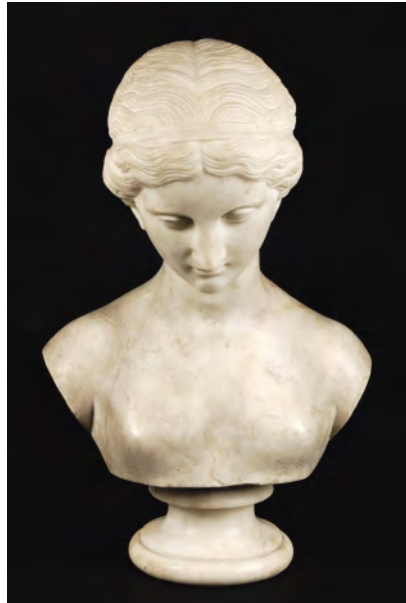
3

3
 A pair of cast iron garden urns, 20th century, of Campana form with ovolo cast everted rims, foliate cast bodies with lobed undersides, waisted socles and square bases, 77cm high, 56cm diameter
 £600-800



4

4 A Continental gilt bronze mounted and *breche violette* columnar pedestal, late 19th century, with Composite capital and egg-and-dart cast socle, 120cm high
£400-600



5

5 A sculpted white marble bust of a maiden, first half 19th century, her head declined, with hair tied back behind, on a circular, waisted socle, 51.5cm high
£400-600



6

6 An early Victorian sculpted white marble bust of a maiden, circa 1840, her head to sinister with hair tied up, her decolletage loosely draped, on a waisted, circular socle, 52cm high
£400-600



7

7 A Czechoslovakian cold painted pottery model of a monkey, circa 1930, portrayed seated on its haunches, the underside stamped *Czechoslovakia JMB 8843*, 37.5cm high
£400-600



8

8 An Austrian cold painted pottery model of a seated pug dog, late 19th century, portrayed seated on its haunches, the head to dexter with inset glass eyes, with collar, 30.5cm high
£300-500



9



11

9
An Austrian cold painted pottery model of a pug, late 19th / early 20th century, portrayed seated on its haunches, the head to dexter, with inset glass eyes, 34.5cm high

£300-500



10

10
A pair of Austrian cold painted pottery models of puppies, late 19th / early 20th century, both portrayed seated on its back legs, with head to sinister, with inset glass eyes, 11cm high, (restorations)

£150-200

11
An Austrian cold painted pottery model of a standing pug dog, early 20th century, naturalistically modelled, with inset glass eyes, 36cm high, 40cm long

£500-800



12

12
An Italian sculpted terracotta bust of a bearded man, possibly Homer or Socrates in his agony, by Paolo Viola, dated 1742, the grimacing face rising to dexter, the neck with stressed musculature, inscribed to the reverse *Gen 205, 1742, Scultato 27 detto, Paolo Viola fecit*, later mounted on a cylindrical Breccia marble plinth, 26cm high overall, (the terracotta damaged and restored)

£150-250



13

13
A Continental painted terracotta bust of a gentleman in 18th century style, 19th century, portrayed with head to sinister, wearing necktie, embroidered shirt and drapery, on a rectangular section waisted socle, 52cm high (restorations)

£300-500



14

14
A set of four Scottish granite columnar pedestals, 19th century, each of plain, cylindrical form, 58.5cm high, 30.5cm diameter
£300-500



15

15
An Italian variegated yellow scagliola pedestal, second half 19th century, of square section with moulded base, 100cm high, 36cm wide, (damage, losses); and an associated white marble socle and base, 19th century, 15m high
£200-300



16

16
A Russian cast iron group of a mare and foal, late 19th / early 20th century, portrayed standing, the foal feeding, on a naturalistic base, indistinctly signed, 32cm high, 33cm wide
£200-300



17

17
A French patinated bronze model of a recumbent German Shepherd dog, early 20th century, cast after R Varnier, portrayed lying on its side, the rectangular base inscribed 'R.VARNIER', 30cm high, 46cm wide, 21cm deep
£300-500



18

18
A Continental possibly Russian gilt bronze and marble mounted group of Apollo and Daphne, in the manner of Gian Lorenzo Bernini, late 19th century, Daphne's arms raised at the moment of metamorphosis, her hands above her flowering, Apollo enveloping her, the floral and foliate cast base on a circular *marmo nero Belgio* and malachite inset base, 56cm high, (probably previously a table lamp, adapted)
£700-1,000



19

19

A Viennese cold painted bronze and stone mounted model of an alighting eagle, early 20th century, by Bergmann, the eagle with spread wings and looking down to dexter, with 'B' in an urn stamped to the underside and inscribed *GESCHUTZ 7785*, 36cm high overall, 38cm wide

£800-1,200



20

20

A French patinated bronze group of two fighting bears, cast after Victor Peter, late 19th century, the naturalistically cast base inscribed *V.PETER* and *Susse Fes. Edn*, 13cm high, 11.5cm wide

£100-150



21

21

A French patinated bronze model of a bear in a trough, cast after Antoine Louis Barye, third quarter 19th century, inscribed *BARYE* to one side of the trough and *F.BARBEDIENNE, FONDEUR, PARIS* along the back, 10.5cm high, 13.5cm long

£600-900



22

22

A French patinated bronze model of a crab, cast after Aime-Jules Dalou, last quarter 19th century, portrayed with an upturned cockle shell before it, inscribed *DALOU, Cire perdue, Susse Fres, Edtr* and also stamped for the foundry, 4cm high, 10.5cm wide

£100-150



23



25

23
A French patinated bronze model of a recumbent panther, early 20th century, cast after Louis Riche, the rectangular base inscribed *L. Riche, Cire Perdue*, 13cm high, 29cm long

£100-150



26



24

24
A French patinated bronze model of a recumbent cat, early 20th century, cast after Louis RICHE, the rectangular base inscribed *L. RICHE, Susse Fres, Edtd. Paris*, 7.5cm high, 17.5cm long

£60-80

25
A French part cold painted bronze group of two finches and a snail on a dish, cast after Louis Carvin, early 20th century, the rim inscribed *L. CARVIN, Susse Fres. Edeur. Paris*, 7cm high, 15cm wide; and a French gilt bronze model of a cockerel cast after Fremiet, late 19th century, signed to the base and further inscribed for *F. BARBEDIENNE PARIS*, 7cm high

£70-100

26
A bronze model of a goddess in 19th century style, wearing a flowing robe and holding a dish and with a cornucopia over her shoulder, 37cm high, 26cm wide, 22cm deep

£300-500

Provenance: John Hobbs Fine Art Limited



27



28

27
A Continental bronze model of Zeus,
 early 19th century, portrayed holding a
 thunderbolt in his right hand, his right
 foot resting upon an eagle, on a
 cylindrical *marmo rosso levanto* plinth
 with square base, 41.5cm high
 £700-1,000

28
**An Italian sculpted green serpentine
 marble model of the Capitoline Dying
 Gaul,** late 19th century, after the Antique,
 the base carved with shortsword, shield
 and horn, 16cm high, 28cm long
 £100-150



29



30

29
**An Italian bronze group of Pan and the
 Infant Bacchus,** 19th century, cast after
 the Antique, the infant seated on Pan's
 shoulders and holding a bunch of grapes,
 the woodland deity beside a stump over
 which a goatskin and his pipes are
 draped, on a rectangular section onyx
 and marble base, 23cm high overall
 £200-300

30
**A Continental patinated bronze group
 of Silenus with the Infant Bacchus,**
 first half 19th century, cast after the
 Antique, on a waisted, circular socle
 and a turned and ebonised wood base,
 15cm high overall
 £150-200



31

31
A pair of French patinated bronze and *marmo portoro* mounted models of standing putti, late 19th century, cast after Louis Sauvageau, one portrayed holding a bird, the other a nest, each with signature inscribed to base, on polished white plaster cylindrical plinths, the bronzes 75cm high, height overall, 116cm

£1,500-2,000

32
A Continental patinated bronze and *marmo nero Belgio* mounted model of a reclining putto, last quarter 19th century, portrayed reclining on drapery against a truncated column, reading a book with his right arm resting on another, the rectangular section plinth with moulded edge, 26.5cm high, 30cm wide

£300-500

33
An Italian bronze table oil lamp, probably 17th century, the domed and lobed circular cover with rearing horse surmount, the conforming, lobed body on three supports also cast as rearing horses, 17.5cm high, 13.5cm wide

£500-700



32



33



34

34
 A German bronze group 'Dancing Bacchante and Infant Satyr', after August Schreitmüller, circa 1900, the figures portrayed on a circular naturalistically cast base, with stamped foundry mark *M u Co.* and signed *A. Schreitmüller fec.*, later mounted onto a square section black marble base with two oval brass presentation panels, the front one inscribed *Humoreske*, the reverse one *23 Nov 1908 Helene Adolph*, the bronze 30cm high, 30cm wide, 37.5cm high overall

Provenance: Previously with Frost & Reed, St James's, London

£1,500-2,000

35
 A Continental patinated bronze stand cast as a cherub with a tambourine, late 19th century, after Auguste Moreau, the tambourine as the stand, held aloft by the cherub reclining on draped rockwork, the oval base inscribed *Aug Moreau*, 14cm high, 13cm wide

£150-200



35



36

36
A Continental gilt bronze group of Bacchantes at revel, late 19th century, cast after Claude Michel called Clodion, with two classically draped maidens and three amorini, on a naturalistically cast base with a wine jar, 54cm high, (currently in disassembled state)

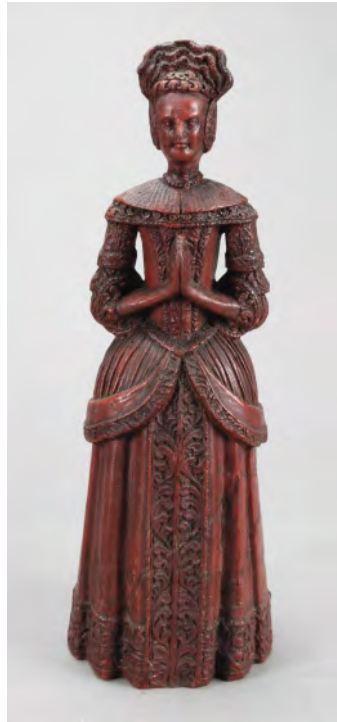
£800-1,200



37

37
A French patinated and parcel gilt bronze model of a putto, mid 19th century, probably emblematic of Winter, portrayed clutching a cloak around him and seated on a naturalistically cast outcrop, on a scrolling foliate cast base of cartouche section, 16.5cm high

£200-300



38

38
A sculpted red wax model of a lady, probably early 18th century, modelled standing with arms clasped together in prayer, portrayed wearing contemporary dress, 33cm high

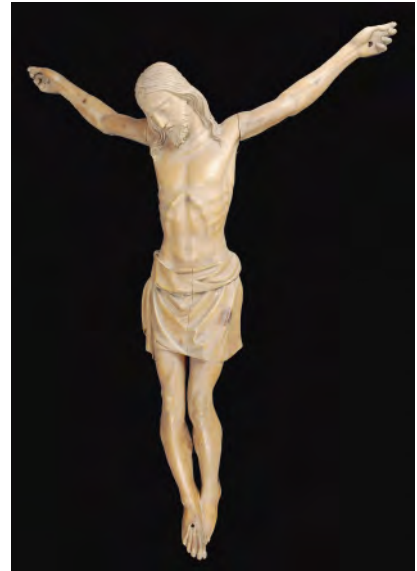
£200-300



39

39
A George III mahogany and brass bound plate bucket, circa 1780, with brass swing handle, 33cm high, 33cm diameter

£400-600



40

40
A Continental sculpted limewood Corpus Christi figure, late 19th century, of typical form, Christ's head declined to dexter, 100cm high, 83cm wide

£300-500



41

41
A carved and polychrome painted wood model of a dog's head, late 19th / early 20th century, anthropomorphised and portrayed wearing a broad-brimmed hat and a red, white and blue ruff, possibly previously a fairground decorative mount, 33cm high, (redecorated)

£200-300



42

42
A collection of assorted ancient Egyptian and other antiquities, comprising an Egyptian faience group of Isis and Horus, probably Late Period – Ptolemaic, post 600 BC, 12.3cm high; two Coptic carved bone crucifixes; an agate conoid seal, probably ancient, 3cm high; a Chinese gilt bronze relief cast mask, possibly Han Dynasty, 5cm wide; an ancient Egyptian miniature mumiform figure, 6cm long; and other items including a bronze model of a kneeling mouflon; a small bronze bell; and a cylinder seal; all probably 19th century; a gold and polished stone ring, 20th century; and other items

£500-700



43

43
An Anglo-Indian ivory veneered and sadeli-worked sandalwood stationery box, last quarter 19th century, with hinged, sloping top and canted sides, the fitted interior with the initials *JH* inset to the cover, 9cm high, 21.5cm wide

£100-150



44

44
An Anglo-Indian straw-work and penworked ivory mounted sandalwood workbox, probably Galle, circa 1830, of sarcophagus form, with lobed handle to the hinged cover, on lobed ball feet, the fully fitted interior with lift-out tray with various divisions and subsidiary covers, 17cm high, 31cm wide, (losses)

£400-600

45
A Vizagapatam penworked ivory veneered sandalwood workbox, circa 1800, of rectangular form, the exterior decorated with foliate swags and borders overall, on four (later associated) lobed feet, the fully fitted interior with lift-out tray with various compartments, implements and subsidiary covers, 12cm high, 29cm wide

£1,500-2,000



45



45 (detail)



47



47 (detail)



46

46
A brass and *faux* tortoiseshell marquetry photograph frame in the **Bouille style**, 20th century, with arched top and easel strutt support, 30cm high; 22cm wide; and a gilt metal photograph frame, 20th century, 30.5cm high
£150-250

47
An Anglo-Indian *sadeli-work* and ivory veneered sandalwood workbox, second half 19th century, of sarcophagus form, with hinged cover, a swing handle at each end and four metal paw feet, the cover interior with a removable mirror, above a fully fitted lift-out tray with compartments, implements and subsidiary covers, 13.5cm high, 37cm wide, (losses)
£700-1,000



48

48
A specimen marble and hardstone inset circular table top, of recent manufacture, the flowerhead pattern with radiating petals composed of various specimens including malachite, lapis lazuli, bluejohn, *marmo portoro* and others, 64cm diameter, 2cm thick
£400-600



49

49
A specimen marble and hardstone inset circular table top, of recent manufacture, decorated with 'the Doves of Pliny', within concentric borders of geometric inlay, including onyx, malachite and *marmo portoro*, 63cm diameter, 2cm thick
£400-600



50

50
A pair of Victorian parcel gilt cut ruby and clear glass table lustres, circa 1870, with prismatic pendant drops, 31cm high
£150-200



51

51
A Limoges porcelain Sèvres-style gilt-bronze mounted vase and cover, circa 1900, painted with a panel of a maiden, the domed cover with pineapple finial, twin foliate cast handles descending from a collar to the shoulder, with waisted socle, spreading circular foot and square, foliate cast base, 46cm high
£400-600



52

52
A pair of Continental cold painted terracotta models of a couple in Levantine dress, early 20th century, impressed 'JM', 45.5cm high
£300-500



53

53
A Victorian black slate inkstand, circa 1860, surmounted by a bronze model of a greyhound flanked by cut glass wells, 26cm high, 37cm wide
Provenance: Hardy family of Chilham Castle, Kent and thence by descent
£200-300



54

54
A quantity of soapstone models of fruit, 20th century, including two bunches of grapes, a pomegranate and another
£100-150

55
An Indian elephant tusk mounted hardwood dinner gong, 19th century, 76cm high
£600-800



55



56

56
A rosewood library magnifying glass, 19th century, with ribbed surround and knopped, baluster handle, 39cm long
£150-250



56A

56A
A pair of Chinese polychrome lacquered wood and composition barrels and covers, late 19th / early 20th century, of canted square section decorated with figures in landscapes, gilt floral and studded borders, one with metal liner 41.5cm high
£300-500



58

58
An oak bread board and a cheese board by Robert 'Mouseman' Thompson, each carved with a mouse, the cheese board of oval form with an integral handle, 37cm wide overall, the bread board of hexagonal form, 31cm wide overall
£200-300



60

60
A Queen Anne or George I painted wood table cabinet, first quarter 18th century, the raised top with moulded edges, above two hinged doors enclosing six drawers, the rectangular section base with drawer, 25cm high, 23.5cm wide
£150-250



57

57
A Victorian cast iron and brass door porter modelled as a stag by foliage, late 19th century, 41cm high, 19cm wide
£200-300



59

59
A Korean red lacquer and brass mounted box, late 19th / early 20th century, of rectangular form, the hinged cover decorated with birds amid flowers, leaves and tendrils, the sides with birds, flowers and butterflies, on six stile feet, 42cm high, 64cm wide, 50cm deep
£150-250



61

61
A Black Forest carved and stained wood hanging corner cabinet, early 20th century, with a balustraded gallery above the cupboard, the door modelled with hanging game, 70cm high, 36cm wide
£150-200



62

62
A brass bound coromandel decanter case, second quarter 19th century, the hinged cover with inset monogram, the fitted interior with four glass decanters with stoppers, 25cm high, 21.5cm wide, (decanter possibly associated)

£150-200



63

63
A teak and brass bound travelling writing slope, second quarter 19th century, the hinged cover with inset brass plaque inscribed GBR, the ends each with a recessed swing handle, with fully fitted interior, 19cm high, 55cm wide

£150-200



64

64
A fruitwood tea caddy modelled as a pear in the George III style, of probable recent manufacture, the hinged top with a stalk, the interior with metal lining, 16cm high

£150-200

65
No lot



66

66
A George II embroidered sampler, dated 1738, with alphabetic, numerical and Biblical text within foliate borders, later framed and glazed, 46cm high, 22cm wide overall

£150-200



67

67
A George IV embroidered sampler, dated April 23rd 1828, the work of Mary Richman Aged 10 Years, with moralistic text within foliate and floral borders, above animals and further foliage, later framed and glazed, 44cm high, 42cm wide
£300-500



68



70



71



72



73

68

A William IV embroidered sampler, dated Feb 13th 1837, by Harriet Froude, with moralistic verse within borders of birds, insects and foliage, later framed and glazed, 37cm high, 41cm wide overall
£300-400



69

69

A George III oval silkwork picture of a maiden in a landscape, late 18th century, portrayed seated against a tree and holding a floral wreath, within a parcel gilt and *verre eglomise* border, in a giltwood frame, 43cm high, 37cm wide; and a George III embroidered picture of flowers, late 18th century, glazed and with gilt composition frame, 33.5cm high, 29.5cm

£200-300

70

A George III painted silkwork picture of figures in a landscape, circa 1800, with a draped and bare-footed couple approaching a further figure, with a river, foliage and palms in the background, later framed and glazed, 39cm high, 48cm wide

£200-300

71

An Aubusson tapestry panel in the Rococo style, circa 1860, the central oval reserve with a maiden entreating before a Herm figure, a tholos and foliage in the background, within a laurel border, on a cross-hatched ground with foliate swags above trailing bellflowers, further foliate sprays flanking a trophy below, 194cm high, 168cm wide, (later backing)

£3,000-5,000

72

A George III painted and parcel gilt paper and ivory mounted fan, late 18th century, with figural scene inside a cartouche on a ground of floral sprays, arranged on fourteen white metal inset stems, 28cm high, 52cm wide opened; set into a glazed and giltwood case, 39cm high, 64cm wide

£400-600

73

A George IV beadwork picture portraying a Classical Capriccio, dated 1827, with two figures in rustic dress beside a fountain, beneath a colonnaded portico with further structures behind, text beneath reading JULIE CROUL A SOPHIE BARWINSKI EN 1827, later framed and glazed, 26cm high, 35cm wide

£200-300

Dreweatts¹⁷⁵⁹

LIGHTING AND
METALWARE





74

74
A George II pewter charger, circa 1735, with a broad, plain rim, touchmarks to the underside for John Duncombe, 5cm high, 37.5cm diameter

£200-300



75

75
A Nuremberg brass alms dish, late 17th century, the central boss with *repousse* work foliate decoration with othic text around, the raised rim with Gothic arcading to the outer edge, 5cm high, 49cm diameter

£200-300



76

76
An English or Dutch bell metal mortar, 17th century, with flared rim and multi-ribbed body and base, 9.5cm high, 12cm diameter, with an associated bronze pestle, probably 18th century, 18.5cm long; and two Low Countries brass mortars with pestles, smaller, 19th century

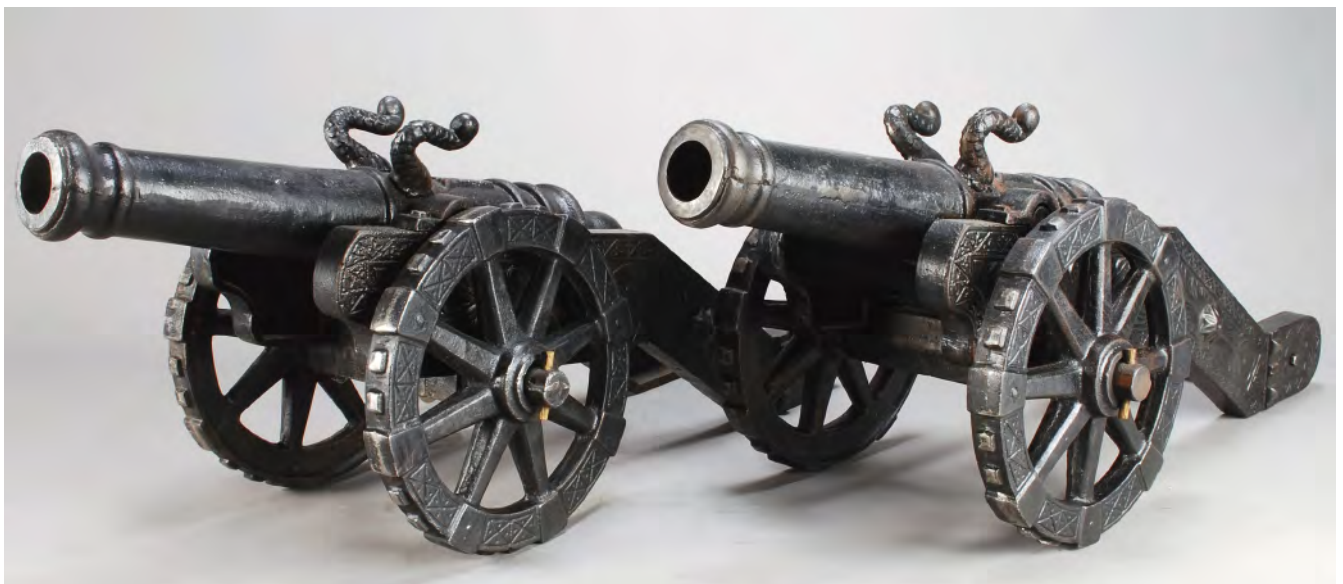
£150-200



77

77
A Victorian black painted cast iron stick stand, late 19th century, with foliate cast finial above an openwork roundel with relief cast bust of a maiden to the centre, 'VICTORY' inscribed to a tablet below, the shaft supports descending to a rectangular section base with twin lift-out drip trays, with registration stamps to reverse and underside, 90cm high, 44cm wide

£200-300



78

78
A pair of cast iron models of field cannon, 20th century, each with ribbed barrel, foliate cast carriage and two spoked wheels, 30cm high, 74cm long

£700-1,000



79

79
A set of three Victorian steel and brass mounted fire irons, circa 1840, comprising shovel, poker and tongs, all with foliate cast grips and twisted shafts, the shovel 80cm long; another set of three steel fire tools, early 20th century, adapted from bayonets, (damages); a Victorian copper warming pan with turned fruitwood handle, and a Victorian brass and sheet iron fender

£200-300



80

80
A set of George III brass fire irons, circa 1800, comprising shovel, poker and tongs, all with knopped grips and shafts, the tongs with foliate cast shoulders, 77cm long

£250-350



81

81
A pair of Victorian brass and wrought iron mounted chenets, circa 1870, cast opposing, each with a bird's head amongst and rising from openwork scrolling foliage and strapwork, with conforming openwork bases, with iron billet supports behind, 50cm high, 26cm wide

£200-300



82

82
A cast iron, steel and brass firegrate in George III style, 20th century, serpentine fronted, 75cm high, 80cm wide and 40cm deep

£400-600



83

83
A cast and wrought iron and brass mounted firegrate in the George III style, 20th century, the arched backplate with relief cast urn, the serpentine fronted and railed basket with twin urn finials, the pierced apron running to further finials above the projecting front legs, 70cm high, 66cm wide

£300-500

84
A cast iron firegrate in the manner of George Bullock, first half 19th century, with arched backplate above a three-railed basket with obelisk finials, flanked by pitched topped sides, on tapering uprights to rectangular section bases, 64cm high, 84.5cm wide, 34.5cm deep

£1,500-2,500



84



85

85
 A Victorian polished iron chimneypiece and grate in George III taste, late 19th century, with serpentine fronted mantel and conforming frieze with Greek Key, the jambs beneath recessed roundels, above recessed spandrels, further mouldings and the arched recess with three rail grate, 128cm high, 131cm wide
 £500-700



86

86
 A carved variegated white marble chimneypiece in the Louis XV style, 20th century, the serpentine shelf above rocaille motifs to the frieze centre, the projecting, canted jambs with scrolled acanthus above volutes and further foliage, 111cm high, 166cm wide, 42cm deep
 £1,500-2,000



87

87
 A variegated white marble chimneypiece in the Louis XV style, 20th century, the serpentine shelf above a moulded frieze with central rocaille shell motif, the canted, projecting jambs with scrolled tops above volutes, 105cm high, 127cm wide, 40cm deep
 £1,000-1,500



88

88
 A carved variegated white marble chimneypiece in Louis XVI style, 20th century, with breakfront shelf above a plain frieze running to flower heads, above fluted jambs, 106cm high, 136cm wide, 40cm deep
 £800-1,200

89
 A George III carved pine chimneypiece, late 18th century with later elements, the mantel with foliate carved moulding above dentil and egg-and-dart carved courses, the scrolling foliate carved frieze above jambs with egg-and-dart carved inner edges, 138cm high, 145cm wide overall
 £400-600



89



90
A Siena marble and carved statuary fireplace in George II style, in the manner of William Jones, with a moulded shelf above a central female mask flanked by swags and scrolling corbels, the uprights with scrolls, 168cm high, 180cm wide, 32.5cm deep
Provenance: John Hobbs Fine Art Limited
£20,000-30,000





91

91 A pair of Louis Philippe patinated bronze and gilt metal mounted figural candlesticks, the sockets cast as baskets of fruit each held above the head of a standing putto, on circular foliate cast bases and scrolling foliate feet, 25cm high

£600-800



92

92 A pair of Empire patinated and parcel gilt bronze figural candlesticks, early 19th century, the engine milled sockets on caryatid's heads, each with square marble base, 27.5cm high

£200-300



93

93 A pair of gilt bronze mounted white marble cassolettes in the Louis XVI style, late 19th century, each of ovoid form (whilst sockets concealed), with domed tops each above a circlet with three ram's heads on monopodia, on circular bases with foliate cast decoration and three toupie feet, the laurel cast sockets with engine milled rims, 19.5cm high

Provenance: Previously with Frost & Reed, St James's, London

£600-800



94

94 A pair of Continental carved and painted wood altarsticks in the 17th century taste, late 20th century, with iron prickets on knopped, fluted and laurel carved stems, with square bases each on four ball feet, 87cm high overall

£300-400



95

95 A German porcelain table lamp base modelled as an owl, late 19th century, with traces of parcel gilt decoration, portrayed on a rockwork base with oak leaves and acorns, 35cm high, (lacking fitments); and two similar smaller French porcelain table lamps modelled as owls, late 19th century, 16cm high

£150-250



96

96
A German porcelain table lamp base modelled as an owl, late 19th century, probably Plaue-on-Havel, with inset glass eyes, parcel gilt decoration and encrusted flowers to the rockwork base, 25cm high; and a French porcelain table lamp base modelled as an owl, late 19th century
£150-250



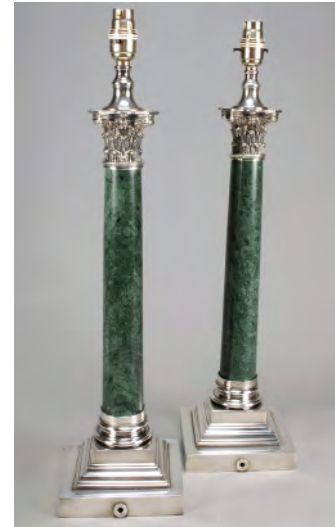
97

97
A pair of Victorian Cornish serpentine marble candlesticks, circa 1880, each with urn form sockets, plain shafts, waisted socles and dished, circular bases, 33.5cm high
£300-500



98

98
A white marble and silver coloured metal mounted table lamp, of recent manufacture, of ovoid form, with twin serpentine handles, 62cm high excluding fitment
£400-600



99

99
A pair of silver plated metal mounted green serpentine marble columnar table lamps, of recent manufacture, with Composite capitals, knopped socles and stepped bases, 58cm high including fitments
£200-300



100

100
A pair of adjustable brass reading lamps, 20th century, each with pressed shell form shades, coiled stems and dished, circular bases, approximately 40cm high
£150-200



102 (2 of 4)

101
A Venetian coloured glass fountain, 20th century, incorporating numerous appliques, lacking bowl (incomplete, see images on website for details)
£100-150

102
A set of four Continental gilt metal twin light wall appliques, second half 20th century, each with sockets rising amongst a tied spray of roses and leaves, 38cm high, 33cm wide, 12cm protrudence
£300-500



103

103

A pair of Italian silvered and gilt metal and glass mounted twin light wall appliques, second half 20th century, in the manner of Bagues, the moulded drip pans on foliate stems rising from tapering, fluted backplates with voluted tops, with foliate and floral sprays rising above, 49cm high, 23cm wide, 13cm protrudence
£300-500

104

A pair of silvered metal and wheel-engraved amber flashed glass wall appliques, probably Venetian, early 20th century, each with twin lion surmounts above the tapering bodies, with three panes decorated with birds within foliate borders, 38cm high, 29cm wide, 13cm deep
£200-300



104



105 (pair)



106

105

A pair of Continental carved, painted and parcel giltwood twin light wall appliques, 20th century, the sockets on scrolling branches issuing from backplates with crossed torches, laurel leaves and tied ribbon finials, 100cm high, 40cm wide, 19cm protrudence
£300-500

106

A Stourbridge green and clear cut glass three-light chandelier, attributed to Stuart, circa 1870, downsept branches, circular shaped nozzles, central baluster stem and bowl hung with prismatic drops, 86cm high, 75cm diameter
£1,000-1,500



107

107
A brass twelve-light chandelier in the Dutch late 17th century style, second half 20th century, the sconces on scrolling branches arranged in two tiers around the knopped stem, with ring and stylised spreadeagle finial, 90cm high, 87cm wide

£400-600



108

108
A lacquered brass chandelier in 19th century Dutch style, the pierced corona above a ring turned column with three scrolling branches above a tier of six scrolling candle branches, with circular ring turned drip-pans, above a spherical finial, 134cm high, 112cm diameter

Provenance: John Hobbs Fine Art Limited

£500-700

109
A brass twelve-light chandelier in the Dutch late 17th century style, 19th century, the sockets and sconces arranged in two tiers of six, all on scrolling branches around the knopped stem, with ring finial and terminal, 65cm high, 69cm wide

£400-600



109

110
A Continental black painted wrought iron fifteen-light chandelier in the Louis XV taste, mid 20th century, the sockets and sconces arranged in two tiers on scrolling branches issuing from an openwork frame, with repousse foliate mounts, with faceted glass drops, 95cm high, 80cm wide

£400-600



110



111

111
A large Victorian copper pier lantern, circa 1880, of hexagonal form, the domed top with ball finial, hinged glass inset door and side panels, on a circular foot, 95cm high, 65cm wide
 £500-700



113

113
A Victorian copper, glazed and wrought iron mounted lantern, late 19th century, the domed vent top with knopped finial, above corner angles with foliate repoussework metal mounts, the iron wall bracket probably later, the lantern 90cm high, 46cm wide; with bracket, 130cm high overall, (lacking one glass pane)
 £200-300



114

114
A gilt metal and glazed hall lantern in the Louis XV style, late 19th / early 20th century, of hexagonal section with bevelled panes, a corona above and a pineapple terminal below, 52cm high, 23cm wide
 £200-300



112

112
A brass and glazed wall lantern, mid 20th century, of rectangular section and tapering form, the cushion top with inverted conical vent with lobed cover, 61cm high, 37cm wide
 £250-350



115

115
A pair of substantial silvered metal and brass lanterns, circa 1930, each with domed top beneath the hanging ring, on hexagonal section entablatures, above six reeded columns enclosing six light fittings, on conforming stepped bases with inverted domes beneath, 108cm high, 45cm wide
 £700-1,000



116

116
A Victorian gilt brass hexagonal lantern, circa 1890, with Gothic arched panels, pierced foliate decoration and painted etched glass, 80cm high
£2,500-3,500



Dreweatts¹⁷⁵⁹

RUGS AND CARPETS



120

120
A North West Persian carpet,
approximately 489cm x 186cm
Provenance: Hardy family of Chilham
Castle, Kent and thence by descent
£300-500



122



123



121

121
A Shiraz long rug, approximately 145cm
x 340cm
Provenance: Hardy family of Chilham
Castle, Kent and thence by descent
£300-500

122
A Persian carpet, in Caucasian style,
approximately 304cm x 373cm overall
£300-500

123
A Heriz carpet, approximately 349cm x
235cm
£300-400



124

124
A Khamseh rug, approximately 190cm x 120cm
£200-300



126



125

125
A Malayir rug, approximately 160cm x 125cm
£200-300



128
A Quasquai long rug, approximately 300cm x 150cm
£400-600

126
A Shirvan carpet, approximately 251cm x 202cm
£300-500

128

129
A Tabriz rug, approximately 193cm x 131cm together with two modern Persian style rugs
£100-150



127

127
A Kirman rug, approximately 190cm x 154cm
£200-300



129



130



131



132

130
A Kashan style carpet, approximately
316cm x 194cm
£200-300

131
A Kashan rug, approximately 190cm x
139cm
£200-300

132
A Persian carpet, approximately 340cm
x 202cm
£400-600



Dreweatts¹⁷⁵⁹
FURNITURE



135
A George II oak court cupboard, circa 1750, with moulded cornice above a pair of panelled doors, three drawers above a further pair of panelled doors, 181cm high, 181cm wide, 63cm deep
 £600-800



137
A Gothic Revival carved oak and inlaid narrow cupboard, in the manner of Bruce Talbert, 131cm high, 62cm wide, 42cm deep
 £600-800

136
A William and Mary oak mule chest, circa 1690, hinged top, mitre fronted above three short drawers, later square section legs, 84cm high, 182cm wide, 49cm deep
 £400-600

138
A George III oak dresser, circa 1780, plate rack with shaped frieze, arrangement of seven open shelves, central cupboard and six drawers, the base with three long drawers, three cupboard doors, bracket feet, 214cm high, 186cm wide, 54cm deep
 £600-800



136



137



139

139
A George III oak dresser, circa 1760, possibly Irish, moulded rectangular top, three drawers and shaped apron, carved throughout with rosettes, guilloche, repeated leaves, cabriole legs and pad feet, 88cm high, 192cm wide, 47cm deep
£500-700



140

140
A harlequin set of nine oak dining chairs, 18th century and later, to include an armchair, rectangular shaped backs, vase splats, solid seats, square section and turned legs
£400-600

141
A William and Mary walnut and featherbanded chest of drawers, circa 1690, rectangular top with moulded edge, two short and three long graduated drawers, later turned bun feet, 80cm high, 81cm wide, 55cm deep
Provenance: Hardy family of Chilham Castle, Kent and thence by descent
£800-1,200



141



142

142
An ash and oak Windsor chair, second quarter 19th century, the hoop back with spindle supports, dished seat on turned legs united by turned stretchers; together with another similar ash and elm Windsor chair, second quarter 19th century
£300-500



143



144

143
A George IV yew, ash and elm high back Windsor armchair, circa 1825, arched spindle back, curved arm rail, solid seat, turned tapering legs

£300-500

144
An ash, elm and fruitwood high back Windsor armchair, second quarter 19th century, together with three wheel back Windsor chairs and a shield back example (5)

£300-500

145
An oak gateleg table, circa 1710 and later, oval top incorporating a pair of hinged leaves, square and baluster turned legs and stretchers, 70cm high, the top 95cm x 55cm

£300-500

146
A George III oak dresser base, circa 1780, arrangement of five drawers, two cupboard doors, square section legs, 91cm high, 183cm wide, 48cm deep

£1,200-1,800



145



146



147



148



149



150

147

A set of Continental oak dining chairs, late 18th / early 19th century, rectangular backs, rosette carved splats, turned and fluted legs

£400-600

148

A George III oak circular tripod table, circa 1780, baluster-turned stem, triple downswept legs, pad feet, 72cm high, 91cm diameter

£400-600

149

An oak coffer, early 18th century, with later carving to the three-panel top, the front carved with a band of lunettes over three lozenges centred a rosette, with iron strap hinges, 64cm high, 114cm wide, 53cm deep

£400-600

150

A yew, ash and elm hoop back armchair, 19th century, with pierced wheel back splat, spindle uprights, dished seat and on turned legs with H stretchers, and another of similar design

£400-600



151

151

An oak tester four poster bed, in 17th century style, 20th century, ornately carved headboard, cup and cover and plinth posts, 236cm high, 200cm wide, 250cm long

£600-800



152

152
A George II oak lowboy, circa 1740, the rectangular crossbanded top above an arrangement of three drawers on slender downswept legs, 71cm high, 80.5cm wide, 51cm deep

£400-600



153

153
A George III oak lowboy, circa 1770, the rectangular top above one long and two short drawers on square section tapering legs, 69cm high, 83cm wide, 51cm deep

£400-600



154

154

A George I walnut side table, circa 1720, rectangular top with moulded edge, three drawers, shaped frieze, cabriole legs and pad feet, 72cm high, 75cm wide, 46cm deep

Provenance: Hardy family of Chilham Castle, Kent and thence by descent

£800-1,200

155

A mahogany, marquetry and parcel gilt fretwork wall mirror in George I style, circa 1900, with eagle cresting and paterae marquetry apron, 92cm high, 48.5cm wide

£150-200

156

A William and Mary walnut wing armchair, circa 1690, green velvet upholstered back, arms and seat, on cabriole legs united by turned and square section stretchers

£2,000-3,000



155



156



157

157
 A Queen Anne walnut kneehole desk, circa 1705, rectangular crossbanded and quarter veneered top with moulded edge, above a drawer, apron drawer and kneehole cupboard flanked on either side by three short drawers on bracket feet, 78cm high, 76cm wide, 47cm deep
 £1,500-2,000

158
 A pair of giltwood wall mirrors in Queen Anne style, late 19th / early 20th century, rectangular plates, cartouche shaped frames, griffin terminals, 88cm high, 50cm wide

£600-800

159
 A walnut and featherbanded dressing table and mirror, in Queen Anne style, early 20th century, the table with a pair of frieze drawers, acanthus carved cabriole legs and pad feet, 82cm high, 107cm wide, 56cm deep

£500-700



160

160
 A walnut footstool, in George I style, early 20th century, rectangular seat, cabriole legs and pad feet
 £400-600



158



159 (stool not included)



161



162



163

161
A William and Mary walnut and upholstered side chair, circa 1690, arched rectangular back and seat, block and turned legs and stretchers, turned bun feet and an oak and upholstered armchair in Louis XIV style, 19th century.
£400-600

162
A William and Mary walnut side chair, circa 1690, rectangular back, vase splat, drop-in seat, cabriole legs and pad feet, together with a George I walnut side chair, circa 1720, of similar overall design
£400-600

163
A Queen Anne walnut side table, circa 1710, quarter veneered top, moulded edge, three short drawers, cabriole legs, pad feet, 70cm high, 78cm wide, 49cm deep
£2,000-3,000

164
A William III walnut chest of drawers, circa 1700, rectangular top with moulded edge, two short and three long graduated drawers, bracket feet, 89cm high, 99cm wide, 54cm deep
£800-1,200



164



165

165
A George II mahogany cabinet bookcase, circa 1740, the upper glazed bookcase section with carrying handles, above a pair of cupboard doors, on bracket feet

£400-600



166

166
A walnut and giltwood cabinet on stand, the cabinet circa 1740, the stand 20th century, the cabinet with carved moulded edge and two carrying handles, the cupboard doors opening to accommodate shelves, on a base incorporating one long drawer, with giltwood scroll carved frieze and acanthus carved legs and feet, 115.5cm high, 60cm wide, 59cm deep

Provenance: Exors of the late Mrs Julian Berry

£500-700



167

167
A George II mahogany card table, circa 1740, with plain frieze on club legs with lappet caps and pad feet, 74cm high, 90cm wide, 44cm deep

£300-500



168

168
A George II cabinet on later stand, the cabinet circa 1740, the stand circa 1900, moulded cornice and blind fret frieze, pair of parcel gilt glass panelled doors, the stand with plain frieze, acanthus carved cabriole legs, hoof feet, 196cm high, 113cm wide, 37cm deep

£600-800



169

169
A mahogany and caned long stool, in George II style, late 19th / early 20th century, moulded frieze, centred by carved shells, shell and bellflower carved cabriole legs, claw and ball feet, 39cm high, the seat 106cm x 47cm

£400-600



170



170 (detail)

170
A George II mahogany folding card table, circa 1750, the rectangular top with outset corners, frieze drawer, lapped carved turned legs, pad feet, 73cm high, 82cm wide, 38cm deep
£600-800



171

171
A George II mahogany stool, circa 1750, drop-in seat, plain frieze on cabriole legs and pointed pad feet, 40cm high, the seat 46cm x 55cm
£300-500



172

172
A George II mahogany dropleaf dining table, circa 1750, rectangular top, cabriole legs and pad feet, 76cm high, the top approximately 180cm x 120cm
£300-500



173

A mahogany, parcel gilt and fret carved secretaire cabinet, in George III style, the dentil moulded architectural cornice with outset corners, above a band of blind fret carved decoration, the mirrored door within a carved gilt border enclosing shelves and small drawers, the top and base flanked by turned columns carved with ribbons, trailing leaves and flowers and with brass capitals headed by blind fret carved blocks, the moulded base with outset corners, the secretaire drawer with pigeon holes and drawers above three long drawers, on blind fret carved bracket feet, 227.5cm high, 106cm wide, 58.5cm deep

Elements of recent construction

Provenance: John Hobbs Fine Art Limited

£5,000-7,000



174



174 (detail)

174
A George II walnut and featherbanded bureau, circa 1740, rectangular fall opening to a fitted interior, an arrangement of drawers and pigeon holes, later bracket feet, 107cm high, 97cm wide, 60cm deep
£800-1,200



175



176

176
A George II walnut, oak and featherbanded chest on chest, circa 1740, three short, five long drawers, later bracket feet, 154cm high, 104cm wide, 58cm deep
£600-800



177

177
A Queen Anne walnut and featherbanded chest of drawers, circa 1710, moulded top, two short and three long graduated drawers, on later bun feet, 85cm high, 95cm wide, 56cm deep.
£800-1,200



178

178
A mahogany conversation seat in George II style, 20th century, curved arm rails, pierced vase splats, drop in seats, cabriole legs, claw and ball feet, 135cm wide overall
£300-500



179

A George II carved mahogany centre table, circa 1740, white and grey veined marble top above a plain frieze centred by a carved shell, on slender acanthus carved legs terminating in scroll feet, 79cm high, 114cm wide, 65cm deep (shell terminals to frieze recently added)

Provenance: Christie's King Street, Important English Furniture, 4th July 2002, lot 12

Restored and adapted by Mr D. Buggins

£8,000-12,000



180



181



182

180

A George II walnut side table, circa 1735, moulded rectangular top, quarter veneered, one long and three short drawers, square section legs, 72cm high, 77cm wide, 46cm deep

£1,200-1,800

181

A set of green painted wood chairs, in George III style, 19th century, each with an arched shieldback, shaped uprights, square section tapering legs

£400-600

182

A mahogany serving table, in George III style, late 19th / early 20th century, with three frieze drawers, flanked by two dummy drawers, on square tapering legs with block feet, 92cm high, 122cm wide, 66.5cm deep

£600-900

183

A mahogany library writing table, in George III style, of recent manufacture, rectangular top with leather inset, rectangular trestle uprights, reeded downswept legs, brass lion paw caps and castors, 81cm high, the top 108cm x 188cm

£1,000-1,500



183



184



185

184
A George III mahogany tripod table, circa 1760, the circular tilt top with birdcage action on baluster-turned column and cabriole legs, with pad feet, 70cm high, 56cm diameter
 £400-600

185
A George III mahogany D end dining table, circa 1810, shaped rectangular top, central section incorporating a hinged leaf, plain frieze inset with stringing, square section tapering legs, 76cm high, the top 123cm x 224cm
 £400-600

186
A George III oak dresser base, circa 1760, rectangular top with three drawers to rear section, three further drawers, shaped legs, 89cm high, 191cm wide, 58cm deep
 £600-800

187
A mahogany and red leather upholstered wing armchair, in George III style, 19th century, rectangular back, shaped wings, scroll arms, loose cushion seat, square section tapering legs
 £600-800



186



187



188

188
A mahogany writing table, in George III style, 20th century, moulded and leather inset top, frieze drawer, square section tapering legs, 78cm high, the top 138cm x 106cm

£400-600

189
A George III mahogany serpentine chest of drawers, circa 1780, with four long graduated drawers, flanked by reeded columns, on outswept legs, 103cm high, 124cm wide, 58cm deep

£2,000-3,000

190
A walnut silver table, in George II style, 20th century, tray top, above cushion moulded drawer on cabriole legs and pad feet, 75cm high, 85cm wide, 50cm deep

£700-1,000



191

191
A George III mahogany chest on chest, circa 1780, moulded cornice, with two short and three long drawers, above a slide and drawers, 190cm wide, 107cm wide, 56cm deep

£400-600



189



190



192

192
A George III mahogany clothes press, circa 1780, moulded cornice, twin panelled doors, two short and two long drawers, bracket feet, 201cm high, 122cm wide, 62cm deep

Provenance: Hardy family of Chilham Castle, Kent and thence by descent

£700-900



193

193
A pair of George III mahogany armchairs, circa 1770, shaped rectangular back, pierced vase splat, fluted uprights, shaped arms, square section legs and stretchers

Provenance: Hardy family of Chilham Castle, Kent and thence by descent

£300-500

194
A George III satinwood and kingwood banded serpentine folding card table, circa 1770, on canted tapered square legs on block feet, 73cm high, 92cm wide, 46cm deep

Provenance: Hardy family of Chilham Castle, Kent and thence by descent

£600-900



194



194 (detail)



195

195
A pair of satinwood marquetry decorated semi-elliptical console tables, George III style, 20th century, inset with marquetry bands and flowerheads, crossbanded frieze, square section tapering legs, 85cm high, 149cm wide, 54cm deep
£1,200-1,800



195 (detail)



196

196
A George III mahogany serpentine fronted side table, circa 1780, shaped top with moulded edge, central frieze drawer, square section legs and block feet, 78cm high, 113cm wide, 58cm deep (later elements)
£500-800

197
A pair of mahogany serpentine commodes, in George III style, of recent manufacture, each moulded top above four long drawers, bracket feet. 86cm high, 121cm wide, 58cm deep
£1,500-2,000



197



198

198
Two matching sets of mahogany hanging wall shelves, in George III style, of recent manufacture, open shelves flanked by pierced supports, each with a pair of drawers, approximately 120cm high, 110cm wide
£700-1,000



199

199
A George III mahogany chest on chest, circa 1800, moulded cornice, two short and five long drawers, bracket feet, approximately 185cm high, 100cm wide
£500-700



200

200
A George III mahogany mule chest, circa 1770, hinged rectangular top, side carrying handles, base with two drawers, bracket feet, 105cm high, 141cm wide, 61cm deep
£500-700



201

201
A George III mahogany chest of drawers, circa 1780, rectangular top, brushing slide and four long drawers, bracket feet. 79cm high, 85cm wide and 47cm deep.
£600-800



202

202
A George III mahogany serpentine fronted serving table, circa 1810, long frieze drawer, square section legs, 86cm high, 150cm wide, 85cm deep
£600-800



203

203
A George III chest on chest, circa 1780, moulded cornice, two short and five long graduated drawers, outswept bracket feet, 169cm high, 114cm wide, 58cm deep
£400-600



204

204

A George III mahogany drum library table, circa 1790, circular leather inset top, four frieze drawers and four false drawers, baluster stem, four downswep legs, brass lion paw caps and castors, 75cm high, 106cm diameter

£1,800-2,500



205

205

A mahogany and upholstered fauteuil, in George III style, 19th century, padded back, arms and seat, cabriole legs

£300-500



206

206

A mahogany extending dining table, first quarter 19th century, formed of two D-shaped ends, a central Pembroke section incorporating two hinged leaves, plain frieze on chamfered square section legs, 72cm high, the top 122cm x 236cm overall

£500-800



207

207

A George III mahogany serpentine fronted sideboard, circa 1770, central drawer, thistle marquetry decorated frieze flanked by two deep drawers on square section tapering legs, 91cm high, 170cm wide, 63cm deep

£1,000-1,500



208

208

A set of eight George III mahogany dining chairs, circa 1800, to include a pair of armchairs, rectangular backs, vertical splats, square section tapering legs

£1,500-2,000



209

209

A cream and green painted inverted bowfront side cabinet in George III style, late 19th / early 20th century, pair of central cupboards, six drawers, simulated bamboo columns, brass caps and ceramic castors, 84cm high, 173cm wide, 69cm deep

£500-700



210

210

A George III mahogany D end extending dining table, circa 1800, moulded frieze, square section tapering legs, 75cm high, the top 123cm x 300cm overall

£2,000-3,000



211

A work table in George III Tunbridgeware style, the hinged top opening to a plain interior, on a crescent support above a platform and four downswept legs and castors, 79cm high, 39.5cm wide, 34cm deep

Provenance: John Hobbs Fine Art Limited
£1,000-1,500



212

212
A mahogany Pembroke table in George III style, the canted rectangular top with two drop leaves above a frieze drawer, on moulded straight legs with brackets and a turned 'X' stretcher, 70cm high, 100cm wide

Provenance: John Hobbs Fine Art Limited

Reputedly purchased at auction at Woolley & Wallis in February 2002

£1,000-1,500

214

A pair of mahogany footstools, in George III style, 19th century, decorated with blind fretwork throughout, square section legs, 43cm high, 50 cm wide, 39cm deep (later mahogany insets to seats)

£400-600



215

215

A George III mahogany casket on stand, circa 1790, domed hinged lid fitted two drawers, on square section tapering legs, brass caps and castors, 87cm high, 47cm wide, 31cm deep

£400-600

213

A harewood and tulipwood banded Pembroke table, circa 1800 and later, rectangular top with central fan marquetry, frieze drawer, square section tapering legs, block feet, 72cm high, the top 71cm x 88cm overall

£400-600



213



214



216 (pair)

216
A pair of George III coromandel lacquer press cupboards, circa 1760, formed from earlier Chinese lacquer screen panels, decorated with figures amongst pavilions, pair of doors enclosing shelves and a pair of drawers, on bracket feet, each 185cm high, 127cm wide, 62cm deep
£4,000-6,000

217
A George III mahogany D end extending dining table, circa 1800, with two additional leaf insertions, plain frieze with moulded edge, square section tapering legs, 72cm high, 117cm wide, approximately 200cm long
£800-1,200

218
A set of twelve mahogany dining chairs, five of George III period circa 1800, including an armchair, the remainder of George III style, 20th century, rectangular lappet carved backs, bar splats, turned tapering legs
£2,500-3,500



217



218



220
A George III mahogany bachelor's chest, circa 1770, rectangular top, brushing slide, four long graduated drawers, bracket feet, 75cm high, 73cm wide, 46cm deep

£300-500



221

221
A George III mahogany kneehole desk, circa 1800, moulded top, brushing slide, seven drawers around the central kneehole cupboard, bracket feet, 77cm high, 86cm wide, 55cm deep

£300-500



219

219
A George III mahogany and gonalcalves banded bureau bookcase, circa 1800, moulded cornice, twin astragal doors, the fall enclosing a fitted interior, three long drawers, bracket feet, 220cm high, 114cm wide, 57cm deep

£400-600



220

222
A George III mahogany and marquetry side table, circa 1790, central fan marquetry to top, two frieze drawers, square section tapering legs, 75cm high, 76cm wide, 46cm deep

£200-300



223

223
A George III mahogany circular tripod table, circa 1770, dished top with moulded edge, baluster stem, triple downswept legs and pad feet

£200-300



224

224
A George III mahogany chest of drawers, circa 1770, moulded top, two short and three long graduated drawers, later bracket feet, 90cm high, 90cm wide, 47cm deep

£300-500



225

225
A George III mahogany concertina action folding tea table, circa 1750, rectangular top, plain frieze, lappet carved and turned tapering legs, pad feet, 74cm high, 69cm wide, 34cm deep
£300-500



226

226
A set of six George III mahogany dining chairs, circa 1790, shaped rectangular backs, vertical splats, overstuffed seats, turned tapering legs
£300-500



227

227
A George III mahogany chest on chest, circa 1780, dentil cornice, two short, six long graduated drawers, bracket feet, 173cm high, 104cm wide, 54cm deep
£600-800



228

228
A George III mahogany hanging bowfront corner cupboard, circa 1770, moulded cornice, a pair of cupboard doors, approximately 100cm high
£500-800

229
A George III mahogany tripod table, circa 1760, in the manner of Thomas Chippendale, shaped circular top, concave sided stem applied with split pillars, acanthus carved downswept legs, rosette terminals, 80cm high, 70cm diameter
£1,500-2,000

230
A George III mahogany tripod table, circa 1780, circular top, carved baluster stem, cabochon and acanthus carved downswept legs, scroll feet, 75cm high, 95cm diameter
£800-1,200



229



230



231

231
A George III mahogany and satinwood strung sofa table, circa 1810, rectangular top with reeded edge, a pair of drawers and an opposing pair of false drawers, baluster stem with four downswept legs and claw feet, on castors, 75cm high, the top 130cm wide, 78cm deep overall

£1,200-1,800



232

232
A George II mahogany dressing and secretaire chest, circa 1750, top drawer opening to a sliding baize inset, above an arrangement of divisions and ratchet adjustable mirror, three further long drawers, bracket feet, 79cm high, 92cm wide, 58cm deep

£1,200-1,800

233
A George III mahogany serpentine side table, circa 1780, with a frieze drawer, on square section tapering legs, 84cm high, 107cm wide, 62cm deep

£500-700

234
A George III mahogany combined card and tea table, circa 1780, pair of folding tops with carved edge, a pair of frieze drawers, blind fretwork carved legs, 73cm high, 82cm wide, 40cm deep

£1,500-2,000



232 (detail)



233



234



234 (detail)



235

235

A set of six mahogany and upholstered dining chairs, in George III style, 19th century and later elements, arched backs, bowed seats, square section tapering legs

£800-1,200

236

A mahogany cabinet on chest, in George III style, late 19th / early 20th century, moulded pair of doors, three long drawers, outswept bracket feet, 169cm high, 82cm wide, 49cm deep

£2,500-3,500



237

237

A mahogany serpentine and satinwood banded commode, in George III style, 18th century and later elements, central shell marquetry to top, two drawers, shaped legs, 74cm high, 96cm wide, 51cm deep

£1,500-2,000



236



238

238

A set of five George III mahogany dining chairs, circa 1770, shaped rectangular backs, pierced vase splats, drop-in seats, square section legs and stretchers

£400-600



239

239
A George III mahogany armchair, circa 1770, arched rectangular back, pierced vase splat, shaped arms, drop-in seat, square section legs
£300-500



240

240
A pair of Regency mahogany hall chairs, circa 1815, moulded oval and tapering backs, later painted central armorials, bowed seats, turned tapering legs at the front
£600-900

241
A set of eight George III mahogany dining chairs, circa 1800, to include an armchair, arched backs, pierced vase splats, drop-in seats, square section tapering legs and stretchers
£600-900

242
A George III mahogany birdcage tripod table, circa 1770, circular top, baluster stem, triple downswept legs, pad feet, 72cm high, 88cm diameter
£500-700



241



242



243

243
A George III mahogany bureau, circa 1760, rectangular fall enclosing an arrangement of drawers and a central cupboard, fitted four long drawers, on ogee bracket feet, 107cm high, 85cm wide, 54cm deep

£500-700



244

244
A George III chest of drawers, circa 1800, two short and three long graduated drawers, bracket feet, 106cm high, 107cm wide, 49cm deep

£600-800



245

245
A carved giltwood and caned window seat in Regency style, 20th century, bowed rectangular seat, shaped arms, baluster turned legs, 67cm wide overall

£400-600



246

246
A George III mahogany and satinwood banded chest of drawers, circa 1790, moulded top, two short and three long graduated drawers, bracket feet, 82cm high, 82cm wide, 44cm deep

£600-800



247

247
A George III painted elbow chair, circa 1790, decorated with neoclassical motifs

£200-300



248

248
A mahogany and leather upholstered tub shaped armchair in Regency style, late 19th / early 20th century, studded throughout, on turned tapering legs

£300-500



249

249

A mahogany pedestal desk in George III style, 20th century, the canted corners with blind fretwork, the top with gadrooned and fluted moulded edge, set a central drawer flanked by two pedestals with four graduated drawers, on ogee bracket feet, top set with gold colour leather inset, 76cm high, 137cm wide, 69cm deep

£500-700



250

250

An oak circular occasional table, 18th century, circular top, baluster stem, downswapped legs, approximately 50cm diameter, 60cm high

£300-400



251

251

A pair of mahogany and leather upholstered elbow chairs in George III style, of recent manufacture, arched backs, turned tapering legs at the front

£200-300



252

252

A pair of George III mahogany dining chairs in Chippendale style, circa 1770, with pierced splat, drop in seats to moulded frame on straight legs with moulded edge and H stretcher

£400-600



253

253
A pair of George III mahogany dining chairs in Chippendale style, with pierced splat, arched top rail with scrolled ears, drop-in seats to moulded frame, on straight legs with H stretcher
£400-600



256

256
A mahogany and chevron strung bowfront sideboard in George III style, late 19th / early 20th century, an arrangement of three drawers and a cupboard door, square section tapered legs and spade feet, 91cm high, 153cm wide, 60cm deep
£500-700



254

254
A George III mahogany tripod table, circa 1790, with dished top, on turned pedestal with concave fluted pillar on carved base with pad feet, 71 cm high, 55cm diameter
£400-600

255
A George III mahogany side cabinet, circa 1800, shaped gallery incorporating a pair of candle boxes, a pair of drawers, a pair of cupboard doors opening to fitted drawers, turned engaged pillars and feet, 104cm high, 114cm wide, 52cm deep
£1,200-1,800



255



257

A set of eight carved mahogany dining chairs, in George III Chippendale style, last quarter 19th century, including a pair of armchairs, the shaped foliate carved top rails above pierced and interlaced ribboned backs, leather upholstered seats, on acanthus and scroll carved square section legs united by stretchers, (arm terminals later altered)

Provenance: John Hobbs Fine Art Limited

Restored and adapted by Mr D. Buggins

£4,000-6,000



258

A George III mahogany piecrust tripod table, circa 1770, the shaped dished tilt top, on a ring turned tapered wrythen stem, on triple acanthus carved cabriole legs and claw and ball feet, 73cm high, 64.5cm diameter

Provenance: John Hobbs Fine Art Limited

£3,000-5,000



259

A George III mahogany chest on stand, circa 1760, the rectangular top above a long drawer and baize lined brushing slide, above two further long drawers, the stand with a shaped apron and carved foliate decoration, on acanthus and cabochon carved legs and scroll feet, 95cm high, 103cm wide, 51.5cm deep

Provenance: Christie's King Street, London, 4th July 2002, Lot 112

£10,000-15,000



260

260

A carved giltwood and ebonised pier mirror, in Regency style, with a divided rectangular plate held within a Greek Key and egg and dart border, surmounted with a shell and scrolls cresting, 167cm high, 110cm wide

Elements of recent construction

Provenance: John Hobbs Fine Art Limited

Restored and adapted by Mr D. Buggins

£2,500-3,500

261

A carved giltwood overmantel mirror in William IV style, the mirror plate in five divisions within reeded frame, each corner centred by a patera, 70cm high, 210cm wide

Provenance: John Hobbs Fine Art Limited

£2,500-3,500



261



262

A walnut open armchair in Continental 18th century style, padded rectangular back and arms terminating in bulbous terminals, down scrolling supports, padded seat acanthus and shell carved cabriole legs, scrolling pointed pad feet

Elements of recent construction

Provenance: John Hobbs Fine Art Limited

£4,000-6,000



263

A George III mahogany breakfront library bookcase, circa 1790, moulded cornice, four astragal glazed cabinet doors, four cupboard doors, plinth base, 273cm high, 245cm wide, 41cm deep

£3,000-5,000



264

264
A set of eight George III mahogany dining chairs, circa 1790, arched rectangular backs, pierced vase splats, woven rush seats, square section legs
£2,000-3,000



265

265
A George III mahogany cabinet bookcase, 1760, moulded cornice, pair of astragal glazed cabinet doors, pair of field panelled cupboard doors, taping outswept feet, 207cm high, 104cm wide, 50cm deep
£800-1,200



266

266
A mahogany upholstered and green leather upholstered wing armchair, in George III style, second half 20th century, on square section legs united by stretchers

£400-600

267

No lot



268

268
A Regency rosewood and brass marquetry folding card table, circa 1815, the folding top opening to a baize inset, on twin downswept supports above a quadform base incorporating four hipped downswept legs, caps and castors, 73cm high, 91cm wide, 45cm deep

Provenance: Exors of the late Lady Anne Cowdray

£600-800

269

A Regency mahogany and boxwood strung sofa table, circa 1815, with hinged leaves and two frieze drawers on rectangular trestle supports on downswept legs, brass caps and castors, restorations, 73cm high, the top 150cm wide, 61cm deep

Provenance: Hardy family of Chilham Castle, Kent and thence by descent

£500-800



269



270

270

A Regency mahogany and ebony strung linen press, circa 1815, moulded cornice, enclosed by a pair of crossbanded doors, above two short and two long drawers, turned feet, 128cm wide

Provenance: Hardy family of Chilham Castle, Kent and thence by descent

£400-600



272



271

271

Two matching sets of ebonised and parcel gilt hanging wall shelves, in Regency style, of recent manufacture, each with pagoda style pediment, spindle column supported open shelves above a drawer, approximately 120cm high

£300-500

272

A Regency and gilt metal mounted mahogany settee, circa 1815, upholstered back and seat, scrolling arms, fronted by shell carved legs with paw feet, 84cm high and 150cm wide

£700-1,000



273

273

A pair of circular silvered wood framed wall mirrors in Regency style, of recent manufacture, each with convex mirror plate, 60cm diameter

£300-500

274

A Regency mahogany and inlaid sofa table, circa 1815, hinged rectangular top, above two drawers and two false opposing drawers, square supports, downswept legs, lappet cast caps and castors, 71cm high, 142cm wide, 60cm deep

£1,000-1,500



274

275

A Regency mahogany and rosewood crossbanded sofa table, circa 1815, hinged rectangular top above two drawers and two false opposing drawers, on rectangular supports on reeded downswept legs, paw caps and castors, 73cm high, 160cm wide overall, 76cm deep

£1,200-1,500



275



276

276

A Regency mahogany and canework three-tier whatnot, circa 1815, baluster turned uprights, shelves with reeded edges, brass caps and castors, 117cm high, 37cm wide, 36cm deep

£300-500



277

277
A George III mahogany and satinwood crossbanded sofa table, circa 1810, pair of drawers and a pair of opposing false drawers, trestle uprights, twin downswept legs, brass lion paw caps and castors, 72cm high, the top 76cm x 168cm overall
£600-800



278

278
A Regency mahogany and crossbanded breakfast table, circa 1815, oblong top, baluster stem, four downswept legs, brass lion paw caps and castors, 74cm high, the top 161cm x 107cm.
£400-600

279
A Regency mahogany writing table, circa 1815, in the manner of Gillows, the ratchet adjustable rest with action to raise the rest, fitted frieze drawer, turned tapering legs, brass caps and castors, 72cm high, 74cm wide, 45cm deep

£1,000-1,500



279



280

280
A Regency mahogany kneehole dressing table, circa 1815, three drawers, turned tapering legs, 78cm high, 95cm wide, 51cm deep

£200-300



281
A William IV mahogany combined games and work table, circa 1835, rectangular hinged top, frieze drawer and work bag, trestle uprights, plinth bases and turned feet, 70cm high, 55cm wide, 45cm deep

£300-500



281



282

282
A Regency mahogany dressing mirror, circa 1815, with oval mirror plate, above a serpentine fronted base incorporating three drawers, bracket feet

£300-500



283

283
A Regency mahogany folding games table, circa 1815, twin hinged leaves, baize inset interior, frieze drawer, turned tapering legs, brass caps and castors, 76cm high, 57cm wide, 47cm deep

£500-700

284
A Regency rosewood and gilt metal mounted circular centre table, circa 1815, four turned column stems, concave sided plinth issuing four downswept scrolling legs, brass caps and castors, 73cm high, 115cm diameter

£1,200-1,800



284



285



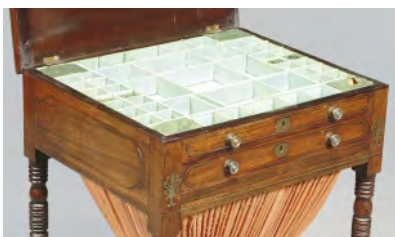
286



285 (detail)

285
A Regency mahogany and gilt metal mounted games table, circa 1815, in the manner of Gillows, rectangular top with twin hinged flaps, sliding section revealing inset fabric backgammon board, trestle uprights, downswept legs, brass caps and castors, 73cm high, the top 92cm x 51cm

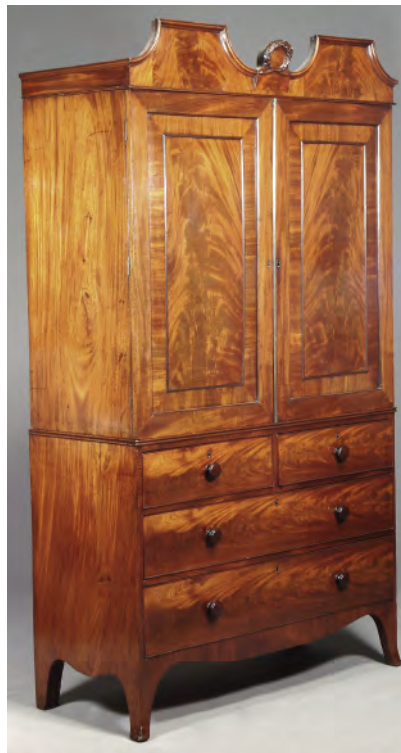
£800-1,200



286 (detail)

286
A Regency rosewood and brass marquetry combined games and work table, circa 1815, hinged chess board inlaid top opening to a divided interior, drawer and work bag, turned tapering legs, brass caps and castors, 74cm high, 50cm wide, 43cm deep

£600-900



287

287
A Regency mahogany clothes press, circa 1815, twin arched cornice centred by a laurel wreath, pair of panelled doors opening to sliding trays, two short and two long drawers, outswept bracket feet, 218cm high, 122cm wide, 56cm deep

£1,200-1,800



288

288
A George IV mahogany supper table, circa 1825, the rectangular hinged top with moulded edge and two D-shaped leaves, over a single drawer, on turned pedestal with four hipped moulded splay legs, fitted with brass lion paw sabots and brass castors, 74cm high, 108cm wide (flaps extended), 91cm deep

£300-500



289

289
A pair of George IV padouk and banded folding card tables, circa 1825, possibly Colonial, dot and line inlaid frieze, twin baluster supports, downswept legs, cast cappings and castors, 78cm high, 92cm wide, 45cm deep
£5,000-7,000



289 (detail)



290

290

A Regency mahogany and crossbanded sofa table, circa 1815, rectangular top, twin hinged flaps, rectangular trestle supports, twin downswept legs, rectangular trestle supports, reeded legs, carved lion's paw feet, concealed castors, 73cm high, the top 160cm x 70cm

£2,500-3,500

291

A mahogany folding coaching table, first quarter 19th century, rectangular top above an X-frame stand, 79cm high, 80cm wide, 54cm deep

£200-300



291



292

A Regency calamander and simulated calamander, specimen wood marquetry decorated sofa table, circa 1815, the geometric marquetry top above a frieze drawer, on dual lyre supports united by a turned stretcher on downswept legs, foliate caps and castors, 73.5cm high, 78cm wide, 51cm deep

Provenance: John Hobbs Fine Art Limited
£4,000-6,000





293

A Regency rosewood and ebonised secretaire side cabinet, circa 1815, in the manner of George Oakley, the arched pediment decorated with anthemion and scrolls, above a pair of mirrored arched doors opening to adjustable shelves, the base with a fall-front secretaire drawer enclosing fitted drawers and pigeon holes, above a pair of cupboards flanked by Egyptian mask headed columns, on tapering square section feet, 170cm high, 77.5cm wide, 42cm deep

Provenance: John Hobbs Fine Art Limited
Sotheby's, Bond Street, London,
Important English Furniture lot 174,
30th June 2004

£6,000-8,000



294

A larchwood and marquetry decorated centre table, in Regency style, in the manner of George Bullock, circular tilt top with an interlaced marquetry border of leaves and flowers, on a triangular section stem and triform platform base on bracket feet, 187cm high, 127cm diameter (marquetry frieze to base recently adapted)

Provenance: John Hobbs Fine Art Limited

Restored and adapted by Mr D. Buggins

£5,000-7,000



295

A pair of oak X-frame stools in Victorian Gothic Revival style, late 19th / early 20th century, with upholstered seats, carved supported centred by a carved stylised flowerhead, 48cm high, 51cm wide, 51cm deep

Provenance: John Hobbs Fine Art Limited

£2,500-3,500



296

296

A Regency rosewood and gilt metal mounted secretaire chiffonier, circa 1815, gilt metal mounted throughout, rear superstructure with two drawers, fall-front secretaire drawer opening to a fitted interior, scroll supports and solid undertier, approximately 140cm high, 100cm wide, 50cm deep

£4,000-6,000



297

297

A Regency mahogany and leather inset writing desk, circa 1815, with two drawers on each of the shortest ends, false drawer fronts to the longest sides, on reeded tapering legs, brass caps and ceramic casters, 75cm high, the top 128cm x 94cm

£700-1,000



298

298

A George IV mahogany circular drum library table, circa 1825, leather in set top above an arrangement of drawers, baluster stem, downswept legs brass caps and castors

£1,500-2,500

299

A William IV goncalo alves extending dining table, circa 1835, with two additional leaf insertions, rectangular top, moulded edge, plain frieze, spiral turned legs, brass caps and castors, 78cm high the top approximately 120cm x 220cm overall

£2,500-3,500

300

A set of six George IV faux rosewood carved and caned dining chairs in the style of Gillow, circa 1825, the backrests with scroll and anthemion carved top rails and splats, with lobed front legs and sabre back legs

£500-700



299



301

301

A George IV rosewood side table, circa 1825, rectangular top with shaped edge, twin baluster turned uprights, downswept legs, scroll carved feet, castors, 78cm high, 100cm wide, 47cm deep

£300-500



300



302

302
A George IV carved rosewood and upholstered stool, circa 1825, of 'X-frame' type with a uniting stretcher, carved overall with scrolling foliage, fruit and flowers, 39cm high, the seat 55cm x 47cm

£400-600



304

304
A George IV burr elm and fruitwood side table, circa 1825, rectangular top, two frieze drawers, turned tapering legs, 74cm high, 107cm wide, 38cm deep

£300-500



303

303
A yew armchair, early 19th century, possibly Sussex, rectangular back with pierced supports centred with roundels, open armchairs, solid seat, turned legs

£500-700



306

306
A George IV mahogany five-tier whatnot, circa 1825, ratchet adjustable top, single drawer, baluster legs, brass caps and castors, 113cm high, 66cm wide, 50cm deep

£400-600



305

305
A George IV mahogany secretaire bookcase, circa 1825, moulded cornice, pair of astragal glazed doors, fitted fall-front secretaire drawer, a pair of field panelled doors, plinth base, 242cm high, 118cm wide, 42cm deep

£1,000-1,500





307



308



309



310

307
A set of six George IV mahogany dining chairs, circa 1825, square backs, lattice splats, square seats, square section tapering legs and spade feet
£500-800

308
A George IV rosewood side cabinet, circa 1825, grey veined white marble top, two frieze drawers, brass grille doors, plinth base, 92cm high, 124cm wide, 35cm deep
£300-500

309
A George IV simulated marble and giltwood centre table, circa 1825, circular top, hexagonal stem, concave sided plinth, lion paw feet and castors, 77cm high, the top 154cm diameter
£400-600

310
A George IV mahogany bookcase, circa 1825, the 'waterfall' upper section of four open shelves over a pair of cupboard doors, on baluster turned legs, brass caps and castors, 172cm high, 77cm wide, 32cm deep
£1,000-1,500



311

311
 A George IV rosewood and gilt metal mounted side cabinet, circa 1825, shelf superstructure, pierced brass galleries, twin glass panelled doors, plinth base, 141cm high, 115cm wide, 39cm deep
 £700-1,000



312

312
 A rosewood and giltwood console table in Regency style, early 19th century and later, rectangular top, plain frieze, lion monopodia, paw feet, plinth base, 78cm high, 104cm wide, 45cm deep
 £1,200-1,800

313
 A set of pine bay window shutters, probably first half 19th century, 264cm high, 160cm wide,
 £400-600



313



314

314
 A George IV mahogany three-tier dumb waiter, circa 1825, with a turned baluster stem, three tiered trays and triple downswept legs with brass caps and castors, 138 cm high, 75cm diameter
 £1,000-1,500



315

A William IV rosewood side table, circa 1835, the rectangular top above a plain frieze, on gadrooned and reeded legs, stamped 'A. SOLOMON/59 GT QUEEN ST', 92cm high, 104cm high, 39cm deep (top adapted in part)

Provenance: John Hobbs Fine Art Limited

£3,000-5,000



316

316
A George IV mahogany breakfast table, circa 1825, rectangular top, baluster stem, downswept legs, brass caps and castors, 78cm high, the top approximately 150cm x 130cm

£400-600

317
A Regency mahogany framed and leather upholstered tub chair, circa 1815, fronted by turned arm supports on turned tapering legs

£300-500



317



318

318
A George IV mahogany secretaire bookcase, circa 1825, possibly Scottish, the upper section with glazed doors with gadrooning, opening to shelves, above a secretaire drawer with satinwood fronted fitted drawers and leather inset above a pair of cupboards on turned feet, 220cm high, 110cm wide, 53cm deep

£1,200-1,800

319
A William IV mahogany partners' pedestal desk, circa 1835, rectangular top with moulded edge, frieze drawers, opposing cupboard doors enclose drawers and shelves, plinth bases, 77cm high, 142cm wide, 95cm deep

£800-1,200



319



320

320
A William IV mahogany extending dining table, circa 1835, circular top extending to incorporate two rectangular leaf insertions, on hexagonal stem and four downswept legs, gilt brass caps and castors, 73cm high, diameter unextended 155cm, 224cm long overall
£700-1,000

323
A set of eight William IV mahogany dining chairs, circa 1835, to include a pair of armchairs, arched rails and bar splats, drop-in seats, turned tapering legs
£700-1,000

324
A set of eight William IV mahogany dining chairs, circa 1835, to include a pair of armchairs, shaped rectangular backs, stylised foliate terminals, turned tapering and reeded legs at the front
£1,000-1,500



325

321
A William IV rosewood open bookcase, circa 1835, bead moulded cornice, an arrangement of adjustable shelves flanked by capital surmounted pillars, turned feet, 117cm high, 135cm wide, 45cm deep (formerly the upper section of a larger item)
£350-450



321



322

322
A William IV pollard oak stool, circa 1835, possibly Anglo-Indian, plain frieze, scroll and acanthus carved cabriole shaped legs, 42cm high, 63cm wide, 70cm deep
£300-500

325
A William IV rosewood five-tier corner whatnot, circa 1835, columnar supports, the lowest shelf with canterbury fittings and a drawer, 171cm high, 88cm wide, 53cm deep
£1,000-1,500



323



324



326



326 (detail)



327



328

328
A William IV mahogany side cabinet, circa 1835, frieze drawer, pair of panelled doors opening to shelves, plinth base, 93cm high, 101cm wide, 46cm deep
 £200-300

326
A circular contentric mahogany dining table in William IV style, of recent manufacture, circular top with five additional outer leaves, 73cm high, 130cm diameter, each leaf 30cm deep, 190cm diameter overall fully extended, the leaves held in a mahogany cabinet, 140cm high, 41cm wide, 52.5cm deep
 £4,000-6,000



327 (detail)

327
A William IV pollard oak circular centre table, circa 1835, tapering faceted stem, lobed circular base, carved lion's paw feet, concealed castors, 80cm high, 132cm diameter
 £400-600



329

329
A William IV bird's eye maple circular centre table, circa 1835, plain frieze, tapering column pedestal, circular plinth, three carved lion's paw feet, 75cm high, approximately 140cm diameter
 £400-600



330
A William IV mahogany and specimen wood 'caricature' occasional table, circa 1835,
the circular tilt top inlaid with a variety of specimen timbers depicting characters in
profile, on a hexagonal section stem and triform platform base, scrolling feet and
castors, the top inscribed at the centre 'Punch for Ever', 75cm high, 65cm diameter
Provenance: John Hobbs Fine Art Limited
Sold Sotheby's, New York, A Celebration of the English Country House:
Furniture, Ceramics and Decorations, Friday 9th April 1999, Lot 803
£6,000-8,000



331



332

331
 A William IV satinwood and painted upholstered sofa, circa 1835, the slightly arched back set a central panel painted cupids and a maiden, set downswept arms with scroll terminals, bowed seat set four square tapering square legs with painted husk motif, on spade feet, 185cm wide
 £1,000-1,500

332
 A William IV mahogany extending dining table, circa 1835, with two large additional leaf insertions, moulded rectangular top, plain frieze, cabochon and acanthus carved tapering baluster legs, brass caps and castors, 74cm high, the top, 159cm x 315cm
 £2,500-3,500



333

333
 A Victorian walnut framed and leather upholstered library chair, circa 1870, the shaped back with carved crest, outswept arms, button upholstered seat, on lapped carved legs
 £300-500



334

334
 A William IV mahogany framed and caned library chair, circa 1835, the outswept caned back above downswept arms terminating in scrolls, fronted by turned legs
 £400-600



335

335
A mahogany gun cabinet in the form of a Wellington chest, of recent manufacture, the hinged door opening to a baize lined interior, 141cm high, 59.5cm wide, 33cm deep

£400-600



336

336
A hardwood and caned campaign day bed, 19th century, open arms, square sections legs and castors

£400-600



337

337

An Aesthetic Movement walnut two-part side cabinet, carved, part glazed and with ebonised and gilt highlights, 180cm high, 122cm wide, 37.5cm deep

£600-800

338

A Victorian oak three-tier buffet, circa 1880, in the manner of A.W.N. Pugin, three quarter gallery, with carved and chamfered supports, sunken castors, approximately 105cm high, 140cm wide, 55cm deep

£1,500-2,000

339

A Victorian giltwood and composition girandole mirror, circa 1860, with scroll and foliate composition frame and three candle holders, 90cm high

Provenance: Hardy family of Chilham Castle, Kent and thence by descent

£150-250



338



341



342



340 (pair)

340
A pair of Victorian giltwood pier tables, in the Louis XVI style, circa 1870, of demi-lune form with marble tops above pierced foliate friezes with central medallion on tapered fluted legs, 54cm wide

Provenance: Hardy family of Chilham Castle, Kent and thence by descent
£400-600

341
A Victorian mahogany inverted breakfront pedestal desk, circa 1870, by E.A. Gilham, Canterbury, with nine drawers around a kneehole on plinth base, 76cm high, 128cm wide, 63cm deep, bearing stencilled maker's mark beneath pedestal

Provenance: Hardy family of Chilham Castle, Kent and thence by descent
£200-300

342
A Victorian mahogany collector's chest, circa 1890, moulded top, arrangement of 20 graduated drawers, on a plinth base, lacking doors, 92cm high, 102cm wide, 47cm deep

Provenance: Hardy family of Chilham Castle, Kent and thence by descent
£200-300

343
A Victorian bird's eye maple cabinet bookcase, circa 1860, in the manner of Holland & Sons, moulded cornice, an arrangement of open shelves flanked by lappet terminals, a pair of grille panelled cupboard doors, plinth base, 212cm high, 116cm wide, 41cm deep

Provenance: Hardy family of Chilham Castle, Kent and thence by descent
£1,200-1,800



343



344 (pair)

344
A pair of Victorian oak and upholstered sofas, circa 1890, with arched backs, outscrolled arms and turned legs, approximately 200cm wide

£400-600

345
A polychrome painted four-fold room screen, circa 1900 and later painted, each screen painted depicting rural scenes, each fold, 169cm high, 62cm wide

Provenance: Hardy family of Chilham Castle, Kent and thence by descent

£300-500



346

346
A mahogany and upholstered sofa, circa 1900, shaped rectangular back and loose cushion seat, scrolls arms, one arm incorporating a hinged mechanism

£600-800



347 (pair)

347
A pair of Victorian satin birch open armchairs, circa 1860, rectangular backs and seats, baluster legs, brass caps and castors

£150-250



348

348
A six-fold room screen, late 19th / 20th century, one side carved with machine woven fabrics of tapestry design, each fold 359cm high, 70cm wide

£200-300



345





349

349
 A Victorian giltwood and composition oval centre table, circa 1860, grey veined white marble inset top, decorated profusely with paterae, acanthus and floral swags, baluster turned and fluted legs, X-shaped stretcher centred by an urn, 88cm high, 95cm wide, 62cm deep
 £800-1,200



350



350 (detail)

350
 A Victorian burr walnut, specimen wood marquetry and oak circular occasional table, circa 1870, the central floral spray within an elaborate foliate border, tapering stem, triple acanthus carved downswept legs, carved scroll feet and castors, 76cm high, 67cm diameter
 £800-1,200



351

351
 A French thuya, ebonised and marquetry inlaid jardiniere, circa 1890, with oval top and removable lid within a pierced brass gallery, shaped tapering legs and an undertier, lacking liner, 80cm high, 56cm wide, 39cm deep.
 £200-300



352

352
 A mahogany rosewood and marquetry occasional table, late 19th / early 20th century, gilt metal mounted, incorporating four hinged leaves, square section cabriole legs, 73cm high, 52cm wide, 52cm deep
 £250-350



353

353
A Victorian giltwood and composition wall mirror, circa 1860, the marginal plate, within a profusely decorated frame, cartouche surmount and stylised flowerhead finials, 130cm high, 90cm wide
£800-1,200



354

354
A Victorian amboyna, ebonised and parcel giltwood side cabinet by Gillow, in Aesthetic taste, circa 1890, with balustraded gallery above an open shelf flanked by fluted pilasters, the door below stamped *GILLOW & CO. LANCASTER* L11724, 128cm high, 77cm wide, 32cm deep
£500-700



355

355
A tôle peinte tray on stand, mid 19th century and later, chinoiserie decorated on a brass simulated bamboo frame, 61cm high
£200-400

356
A Victorian Reformed Gothic oak open bookcase, circa 1880, in the manner of Augustus Pugin, the upper section formed from two parts with trefoil carving and columns, above a base with three cupboards carved in relief flanked by pilasters, plinth base, 262cm high, 210cm wide, 63cm deep
£1,200-1,800



356



357

357
A set of twelve Victorian oak and studded leather upholstered dining chairs, circa 1880, rectangular padded backs with carved surround, padded seat, on carved, blind fret, turned and tapering legs headed by stylised flowerheads, ceramic castors, bearing stamps to rear legs including 2900, 9522
 £1,000-1,500



358

358
A Victorian mahogany and button upholstered sofa, circa 1860, rectangular back and scroll arms, turned bun feet and concealed castors, 185cm wide overall
 £300-500

359
A Victorian mahogany cylinder desk, circa 1870, retractable top, sliding surface, central ratchet adjustable leather inset top, arrangement of drawers and pigeon holes, a pair of carved field panelled cupboard doors, plinth base, 110cm high, 123cm wide, 55cm deep
 £400-600



359



360

360
A Victorian giltwood and composition wall mirror, circa 1870, of arched rectangular form, cabochon and foliate decorated, approximately 210cm high, 195cm wide
 £800-1,200



361

361
A Victorian giltwood and composition wall mirror, circa 1870, of arched rectangular form, cabochon and foliate decorated, approximately 245cm high, 195cm wide
 £800-1,200



362

362
A Victorian ebonised and coromandel banded triangular folding card table, circa 1880, moulded top, turned tapering legs, 72cm high, 101cm wide, 50cm deep
£300-500



364

364
A polychrome painted kneehole desk, circa 1860 and later, painted throughout with neoclassical motifs, rectangular top, frieze drawer, pair cupboard doors, plinth base, 77cm high, 153cm wide, 76cm deep
£700-1,000

366
A Victorian kidney-shaped satinwood occasional table, circa 1860, pierced brass gallery to the top, frieze drawer, pierced trestle uprights, oval undertier, downswept feet, 65cm high, 85cm wide, 45cm deep
£400-600



363

363
A carved hardwood and ebonised stool, mid 19th century Anglo-Indian style, 20th century, rectangular seat, foliate carved frieze, spiral turned legs, brass caps and castors, 46cm high, the seat 80cm x 45cm
£600-800

365
A set of five Victorian rosewood chairs, circa 1860, in the manner of Holland & Sons, each foliate carved cartouche back, serpentine seats, carved cabriole legs
£300-500



365



366



367

367
A giltwood and composition wall mirror in 18th century style, of recent manufacture, decorated with acanthus and fruiting foliage, 142cm high, 78cm wide
£500-700



369

368
A green painted side cabinet, late 19th / early 20th century, carved with scrolling acanthus and masks, two drawers, two panel doors, bracket feet, 103cm high, 152cm wide, 56cm deep
£400-600

369
A cream painted overmantel mirror, circa 1870 and later painted, arched rectangular plate surmounted by a female mask flanked by griffins, 185cm high, 130cm wide
£700-1,000



371



370

370
A pair of giltwood girandoles in 18th century style, 20th century
£400-600

371
A cream painted and parcel gilt oval wall mirror, in Victorian style, 20th century, carved with acanthus, pierced C-scroll surmount, 144cm high, 97cm wide
£700-1,000

372
A giltwood and composition wall mirror in Victorian style, 20th century, the arched frame cast with cabochon and flowerheads, surmounted by a seated cherub, 121cm high, 125cm wide
£400-600



368



372



373 (part)

373

A set of twenty-two William IV ebonised dining chairs, circa 1835, each with rectangular padded backs and seat, carved with paterae throughout, turned tapering and fluted legs at the front

£5,000-7,000

374

A pair of mahogany and leather upholstered cockpen armchairs, in George III style, 20th century, arched rectangular backs, shaped arms, dished seats, turned outswept legs and stretchers

£500-700



374



375



376

375

A mahogany sofa table, in George III style, 19th century, rectangular top, twin hinged flaps, rectangular trestle supports, twin downswept legs, brass caps and castors, 73cm high, the top 68cm x 154cm overall

£2,000-3,000

376

A set of oak library steps, 20th century, of triangular form with four steps to one side, 84cm high, 38cm wide, 64cm deep

£200-300



377

377

A set of mahogany library steps, 19th century, of two steps to one side, 44cm high, 44cm wide, 52cm deep

£200-300



378

378
A Victorian walnut, burr walnut and oak pedestal desk, circa 1890, leather inset top surmounted by a superstructure of two pairs of small drawers, an arrangement of drawers to the frieze and pedestals, bracket feet, 96cm high, 125cm wide, 73cm deep

£800-1,200

379
A Victorian partridge wood and rosewood banded library table, circa 1860, moulded top, frieze drawer, pierced tapering trestle supports, downswept legs, scroll feet and castors, 75cm high, 113cm wide, 59cm deep

£600-800



379



381

380
A Victorian ebony and amboyna breakfront side cabinet in the French taste, circa 1890, the central door set a parquetry panel within geometric inlaid banding, flanked by glazed doors and with tapering inlaid columns to the corners, the whole with gilt metal mounts and set on turned bun feet, 110cm high, 170cm wide overall, 37cm deep overall

£600-800

381
A Victorian mahogany dressing table mirror, circa 1860, with plain rectangular frame, on rectangular base with sloping edges, fitted dished turned feet, 81cm high, 71cm wide, 32cm deep overall

£200-300



382

382
A Victorian walnut three-tier whatnot, the top shelf fitted a brass open gallery rail supported by tapering turned columns, fitted brass cups and china castors, 84cm high overall, 84cm wide, 25cm deep

£300-500



380



383

383
 A Victorian oak bench in Gothic taste, circa 1850, with blind carving to front and side apron, on turned tapering octagonal section legs, the top with chamfered edge, 44cm high, 112cm wide, 30cm deep
 £400-600



384

384
 A Victorian walnut and upholstered chaise longue by Howard & Sons, circa 1860, rectangular seat and back at one end flanked by scroll arms, turned tapering legs, brass caps and castors, each castor stamped HOWARD & SONS LTD, LONDON, 153cm long overall
 £1,200-1,800

385
 A walnut and upholstered three-seat sofa, circa 1900, rectangular back, scroll arms, loose cushion seat, turned legs joined by pierced stretchers
 £800-1,200



385

386
 A pair of Victorian yew and elm armchairs, circa 1860 with saddle seats, turned spindle backs and outswept scroll arms, on turned legs with H stretchers
 £500-700



386

387
 A pair of oak occasional tables in Victorian style, of recent manufacture, rectangular moulded top, baluster turned legs, X-shaped stretcher, shaped block feet, 65cm high, the top 60cm x 59cm
 £200-300



387



388



388
A Victorian satinwood partners' pedestal desk, stamped 'HOLLAND & SONS', circa 1860, green leather inset top, above three frieze drawers and two pedestals each with three further drawers and fluted uprights, the opposing sides with false drawers above two cupboards, the stamp to central frieze drawer, 75.5cm high, 157.5cm wide, 75cm deep

Provenance: John Hobbs Fine Art Limited

£10,000-15,000



389
A Victorian mahogany extending dining table, circa 1860, with turned and reeded legs, on brass caps and ceramic castors, with two leaves, 120cm wide, 209cm when fully extended (see illustration on website)
 £1,200-1,800

390
An upholstered sofa in Knole style, of recent manufacture, arched padded back with tassled finials, drop-ends, tassled fringing on ball castors, 100cm high, 170cm wide, 90cm deep
 £400-600

391
A pair of Edwardian walnut and pink damask upholstered armchairs, circa 1900, arched backs, overstuffed scroll arms, rectangular seat, turned and square section legs, later castors
 £400-600

390



391



392

392
An Edwardian mahogany and satinwood crossbanded revolving bookcase, circa 1910, moulded top, divisions flanked by slatted uprights, 88cm high, 47cm wide, 47cm deep
 £400-600

393
An Edwardian mahogany side cabinet, bearing label for Maple & Co., circa 1900, bearing metal label 'Maple & Co. London, Paris, Buenos Aires', comprising a folio section flanked on either side by a drawer above a cupboard, on plinth base, 200cm high, 210cm wide, 58cm deep
 £800-1,200



393



394

394
An Edwardian mahogany music cabinet, circa 1910, stamped EDWARDS & ROBERTS, frieze drawer, pair of panelled cupboard doors, four upright divisions, squat cabriole legs, 106cm high, 61cm wide, 40cm deep
£500-700



395

395
A satinwood chest of drawers, circa 1930, moulded top, four long graduated drawers, plinth base, 79cm high, 83cm wide, 43cm deep
£300-500



396

396
An Edwardian mahogany and marquetry circular centre table, circa 1910, misletoe marquetry to the centre, moulded edge, square section legs, brass caps and castors, 73cm high, 75cm diameter
£400-600

397
A French marquetry commode, in 18th century Continental style, circa 1900, moulded top, three long drawers, square section cabriole legs, 89cm high, 119cm wide, 52cm deep
£800-1,200

398
A cream painted and marble mounted console table, early 20th century, frieze drawer, patera terminals, turned and fluted legs, X-stretcher centred by an urn, 92cm high, 136cm wide, 55cm deep
£500-700



397



398



399 (pair)

399
A pair of oak and upholstered sofas, in Victorian style, of recent manufacture, rectangular backs and arms, loose cushion seats, each 185cm wide overall

£500-700



401

401
A burr walnut, beech and oak side table by Linley, in early 19th century style, of recent manufacture, inlaid with ebonised stringing throughout, a pair of drawers, square section tapering legs, 76cm high, 130cm wide, 60cm deep **together with a matching side chair by Linley**

£400-600

400
A hardwood and birch cabinet bookcase by Linley, of recent manufacture, moulded cornice, arrangement of open shelves and a pair of cupboard doors, plinth base, 200cm high, 159cm wide, 51cm deep

£1,000-1,500



400



402

402
An upholstered Knole style sofa, retailed by Mulberry, green and gold foliate patterned fabric, high rectangular hinged sides and back, loose cushion seats, 180cm wide overall

£300-500



403

403
An upholstered Knole style sofa, retailed by Mulberry, red and ochre foliate patterned fabric, high rectangular hinged sides and back, loose cushion seats, 210cm wide overall

£300-500



405



406



404

404
An upholstered Knole style sofa, retailed by Mulberry, ochre fabric, high rectangular hinged sides and back, loose cushion seats, 211cm wide overall
£300-500

405
An oak and pollard oak circular dining table, of recent manufacture, pierced tapering stem of shaped uprights, X-shaped plinth feet, 76cm high, the top 196cm diameter
£300-500

406
A set of ten oak and upholstered dining chairs, in late 17th century style, of recent manufacture, arched backs, turned tapering legs
£400-600

407
A pair of oak bedside cabinets, in 17th century style, of recent manufacture, each 77cm high, 70cm wide, 50cm deep
£200-300

408
A mahogany framed and green leather upholstered suite, comprising a settee and two armchairs, padded backs, on square section legs
£400-600

409
A set of mahogany and leatherette library steps, of recent manufacture, turned stem with brass finials, above three steps, 174cm high, 50cm wide
£300-500



409



407



408 (part)



410



411

410
A Dutch carved and ebonised wood and tortoiseshell veneered wall mirror in 17th century style, with stepped ripple and wave mouldings and tortoiseshell margins around the bevelled plate, 120cm high, 89cm wide
£300-500

411
A set of eight stained oak dining chairs, in Continental 18th century style, 20th century, with openwork shaped backs, upholstered seats, fronted by shell carved cabriole legs and pad feet
£600-800

412
An Italian carved and giltwood wall mirror in 18th century style, late 19th century, the pierced surround with opposing cherubs supporting a crown at the top, the sides and bottom carved with foliage, approximately 50cm high
£150-200

413
A pair of carved giltwood wall mirrors in Continental 18th century style, late 19th / early 20th century, of cartouche form, foliate carved and pierced frames, 87cm high, 71cm wide
£600-900



412



413



414

414

A Louis XVI carved wood and painted bedstead, turned tapering fluted uprights, approximately 130cm high, 95cm wide (painting refreshed)

£250-350

415

A Continental carved giltwood wall mirror, late 18th / early 19th century, shaped rectangular plate, scroll carved frame and arched pediment, 165cm high, 93cm wide

£500-700



416

416

A cream painted and needlework upholstered wing armchair, in Louis XVI style, 20th century, rectangular back and shaped wings, padded arms, loose cushion seat, fluted square tapering legs

£300-500



415



417



419

417

A cream painted and needlework upholstered fauteuil in Louis XV style, late 19th century, cartouche shaped padded back and seat, shaped arms and cabriole legs, caps and castors

£300-500

418

No lot

419

A pair of painted panels in Italian 18th century style, painted to simulate marble, 109cm high, 72cm wide

Of recent construction

Provenance: John Hobbs Fine Art Limited

£800-1,200



420



420 (detail)

420
An Italian rosewood and bone marquetry desk, in 18th century style, late 19th / early 20th century, rear superstructure of six drawers, seven drawers around the central kneehole, 108cm high, 146cm wide, 68cm deep
£2,000-3,000

421
A satinwood and tulipwood banded side cabinet, in Louis XVI style, late 19th / early 20th century, 84cm high, 79cm wide, 48cm deep
£800-1,200



421

422

A pair of Continental giltwood and composition wall brackets in the Rococo taste, late 19th century, the semi-circular tops above floral and foliate modelled supports, 22cm high, 31cm wide, 14cm deep

£300-400



422

423

A pair of carved giltwood and painted architectural columns, in 18th century Continental style, gilt capital foliate carved detail to the uprights, 194cm high, approximately 40cm diameter

£1,500-2,000



423



424



425



426



427

424
A carved giltwood and composition wall mirror, in Louis XVI style, 19th century, 86cm high, 45cm wide
£300-500

425
A pair of rosewood and specimen marquetry commodes, 18th century Continental style, 20th century, marble and gilt metal mounted of serpentine form, two drawers, outswept square section legs, 81cm high, 95cm wide, 42cm deep
£800-1,200

426
A painted and parcel gilt Louis XVI style carved wood and upholstered sofa, 20th century, the arched back carved a floral spray, with open scroll arms and serpentine seat, on tapering fluted legs, 180cm wide, 62cm deep
£400-600

427
A pair of walnut framed and upholstered armchairs, in Continental 18th century style, the shaped back with arched top rail, downswept arms terminating in acanthus carved uprights, fronted by shell carved cabriole legs on paw feet
£400-600

428
A Venetian moulded glass framed wall mirror, 20th century, arched sectional plate, scrolling frame interspersed with flowers, 174cm high, 64cm wide
£300-500



428



429

429

A Venetian moulded glass framed wall mirror, 20th century, arched sectional plate, scrolling frame interspersed with flowers, the upper section etched with a scene of hunters carrying a deer, 178cm high, 76cm wide

£300-500

430

A birch writing desk, in Biedermeier style, late 19th century, the rectangular top with leather inset, three frieze drawers, square section tapering legs, gilt toupie feet, 74cm high, 130cm wide, 185cm deep

£600-800

431

A French provincial oak armoire, late 18th / early 19th century, the top carved in relief with a basket of flowers and trailing leaves, above two doors similarly carved, opening to a plain interior, on square section feet, 211cm high, 145cm wide, 74cm deep

£300-500



430



431



433



434



432



432 (detail)

432

A walnut, marquetry and gilt bronze mounted bombe secretaire à abattant, circa 1870, German or Austrian, in Louis XV style, the serpentine rouge marble top above a frieze inlaid with a cornucopia of leaves, the fall inlaid with a bow and a quiver of arrows, enclosing a fitted interior of short drawers and open tiers, base with two cupboard doors, inlaid with scrolling leaves and arabesques on short cabriole legs, foliate sabots, 142cm high, 58.5cm wide

£700-1,000

433

A set of eight grey painted beechwood dining chairs, in Louis XVI style, including a pair of armchairs, with moulded rectangular backs, stuffed seats on stop-fluted turned tapering legs

£600-800

434

A set of six French dining chairs, late 19th / early 20th century, cream painted rectangular upholstered back and seat on square section tapering legs, together with two similar French oak armchairs, late 19th / early 20th century, rectangular padded back, arms and seat, on fluted tapering legs headed by stylised flowerheads

£600-800



436
A French kingwood and marquetry bureau de dame, in Louis XV style, circa 1880, hinged fall opening to a fitted interior, square section tapering cabriole legs, 94cm high, 77cm wide, 52cm deep
£400-600

437
A French walnut circular centre table, circa 1860, hexagonal faceted stem, triple outswept plinth legs, turned feet, 80cm high, 122cm diameter
£300-500



438

438
A Dutch mahogany and marquetry dressing stand, first quarter 19th century, twin hinged top, two drawers, two open tiers, 89cm high, 42cm wide, 44cm deep
£400-600

435

435
A grey painted, parcel gilt and damask upholstered settee, in Louis XVI style, late 19th / early 20th century, of serpentine form, with parcel gilt floral carved cresting, upholstered back, arms and seat with loose cushions, on six cabriole legs, 100cm high, 200cm wide, 100cm deep
£500-800



436 (detail)



436



437



439

A pair of Italian painted wood rectangular stools, in 19th century style, painted in cream with a red ground, the hide seats fixed to the turned sides, on X-framed turned supports and conforming stretchers, paw feet, 65cm high, 54.5cm wide, 41cm deep

Provenance: John Hobbs Fine Art Limited

£1,000-1,500



440

440
A French Directoire mahogany and gilt metal mounted semi-elliptical folding triple card and tea table, circa 1810, tablet moulded frieze, fluted tapering legs, brass feet, 78cm high, 109cm wide, 55cm deep

£400-600

441
A Florentine giltwood framed wall mirror in 18th century style, late 19th century, acanthus carved and pierced frame, 128cm high, 86cm wide

£400-600



441



440 (detail)

442
A white gilt wall mirror in 18th century style, 20th century, acanthus scroll carved frame, surmounted by female sphinx terminals, 119cm high, 115cm wide
£600-800

443
A French provincial standing oak corner cupboard, circa 1760, cartouche panelled and scroll carved twin doors, shaped stile feet, 124cm high, 92cm wide, 60cm deep
£300-500



443



442



444

444

A pair of kingwood and gilt metal mounted display cabinets, in Louis XVI style, circa 1890, panelled frieze, twin bevelled glass pannelled doors, squat cabriole legs, 171cm high, 112cm wide, 43cm deep

£4,000-6,000



445

445

A Napoleon III ebonised, tortoiseshell and brass marquetry bonheur du jour, circa 1880, a pair of doors and a pair of drawers, serpentine lower section with a drawer, cabriole shaped tapering legs, 165cm high, 83cm wide, 58cm deep

£800-1,200



446

446
 A Dutch walnut and marquetry centre table, in 19th century style, 20th century, floral marquetry throughout, rectangular top, frieze drawer, square section tapering legs, X-shaped stretcher, 79cm high, 101 wide, 71cm deep
 £600-800



447

447
 A pair of tulipwood and gilt metal mounted hanging corner cabinets, Louis XVI style, late 19th century/early 20th century, cartouche shaped brackets, shelved interior, 119cm high, 55cm wide, 47cm deep
 £400-600



448

448
 A French mahogany inverted bowfront vitrine, circa 1900, pierced brass gallery, cabinet door, cabriole shaped square section legs, 170cm high, 80cm wide, 42cm deep
 £400-600



449

449
 An Italian giltwood wall mirror in 18th century style, 19th century, of cartouche form, carved with scrolls, 92cm high, 62cm wide
 £300-400



450

450
A carved giltwood and composition console table and pier mirror, late 19th / early 20th century, the mirror with arched plate, the frame decorated with floral garlands and pierced c-scrolls, grey veined white marble top above a conforming table, on scrolling downswept legs, the mirror 204cm high, 88cm wide, the table 78cm high, 92cm wide, 38cm deep

£1,500-2,500

451
A Chinese elm, hardwood and rosewood cabinet, 19th century, three small drawers above two pairs of doors, the lower part enclosing an arrangement of drawers, on block feet, 133cm high, 87cm wide, 42.5cm deep

£2,000-3,000

452
A pair of South East Asian carved hardwood and cream painted X-framed armchairs, probably Thai, 20th century, carved throughout with scrolling foliage and mythical creatures, lozenge shaped back and downswept arms

£400-600



451



452

These Conditions of Sale and Business constitute the contract between Dreweatts (the "Auctioneer") and the seller, on the one hand, and the buyer on the other. By bidding at the auction, you agree to be bound by these terms.

INFORMATION FOR BUYERS

- 1. Introduction.** The following informative notes are intended to assist Buyers, particularly those inexperienced or new to our salerooms. All sales are conducted on our printed Conditions of Sale which are readily available for inspection and normally accompany catalogues. Our staff will be happy to help you if there is anything you do not fully understand.
- 2. Agency.** As auctioneers we usually contract as agents for the seller whose identity, for reasons of confidentiality, is not normally disclosed. Accordingly if you buy your primary contract is with the seller.
- 3. Estimates.** Estimates are designed to help buyers gauge what sort of sum might be involved for the purchase of a particular lot. The lower estimate may represent the reserve price and certainly will not be below it. Estimates do not include the Buyer's Premium or VAT (where chargeable). Estimates are prepared some time before the sale and may be altered by announcement before the sale. They are in no sense definitive.
- 4. Buyer's Premium.** The Buyer agrees to pay a buyer's premium on the hammer price of each lot purchased. The buyer's premium is 22% (26.4% including VAT) of the hammer price on each lot up to and including £250,000, plus 12% (14.40% including VAT) for any amount in excess of £250,000.
- 5. VAT.** (*) indicates that VAT is payable by the purchaser at the standard rate (presently 20%) on the hammer price as well as being an element in the buyer's premium. This imposition of VAT is likely to be because the seller is registered for VAT within the European Union and is not operating the Dealers Margin Scheme or because VAT is due at 20% on importation into the UK. The double symbol (**) indicates that the lot has been imported from outside the European Union and the present position is that these lots are liable to a reduced rate of VAT (5%) on the gross lot price (i.e. both the hammer price and the buyer's premium). Lots which appear without either of the above symbols indicate that no VAT is payable on the hammer price. This is because such lots are sold using the Auctioneers' Margin Scheme and it should be noted that the VAT included within the Premium is not recoverable as input tax.
- 6. Descriptions and Conditions.** Condition reports are provided on our web site or upon request. The absence of a report does not imply that a lot is without imperfections. The detail in a report will reflect the estimated value of the lot, and large numbers of such requests received shortly before the sale may not receive a response to all lots. Members of staff are not trained restorers or conservators and, particularly for higher value lots, you should obtain an opinion from such a professional. We recommend that you always view a lot in person.

We are, primarily, agents for the seller. We are dependent on information provided by the seller and whilst we may inspect lots and act reasonably in taking a general view about them we are normally unable to carry out a detailed or any examination of lots in order to ascertain their condition in the way in which it would be wise for a buyer to do. Intending buyers have ample opportunity for inspection of goods and, therefore, accept responsibility for inspecting and investigating lots in which they may be interested. Please note carefully the exclusion of liability for the condition of lots contained in the Conditions of Sale. Neither the seller nor we, as the auctioneers, accept any responsibility for their condition. In particular, mechanical objects of any age are not guaranteed to be in working order. However, in so far as we have examined the goods and make a representation about their condition, we shall be liable for any defect which that examination ought to have revealed to the auctioneer but which would not have been revealed to the buyer had the buyer examined the goods. Additionally, in specified circumstances lots misdescribed because they are 'deliberate forgeries' may be returned and repayment made. There is a 3 week time limit. (The expression 'deliberate forgery' is defined in our Conditions of Sale).
- 7. Electrical goods.** These are sold as 'antiques' only and if bought for use must be checked over for compliance with safety regulations by a qualified electrician first

- 8. Export of goods.** Buyers intending to export goods should ascertain (a) whether an export licence is required and (b) whether there is any specific prohibition on importing goods of that character because, e.g. they may contain prohibited materials such as ivory. Ask us if you need help.
- 9. Bidding.** Bidders may be required to register before the sale commences and lots will be invoiced to the name and address on the registration form. Some form of identification may be required if you are unknown to us. Please enquire in advance about our arrangements for telephone bidding.
- 10. Commission bidding.** Commission bids may be left with the auctioneers indicating the maximum amount to be bid excluding buyers' premium. They will be executed as cheaply as possible having regard to the reserve (if any) and competing bids. If two buyers submit identical commission bids the auctioneers may prefer the first bid received. Please enquire in advance about our arrangements for the leaving of commission bids by telephone or FAX.
- 11. Methods of Payment.** Any cheques tendered will need to be cleared before removal of the goods is permitted. The following methods of payment are acceptable.

Sterling cheque to be drawn on a UK bank and made payable to 'Dreweatts 1759'. It will be necessary to allow at least five working days for the cheque to clear before collecting your purchases.

Bank transfer. All transfers must state the relevant sale number, lot number and your bid / paddle number. If transferring from a foreign currency, the amount we receive must be the total due in pounds sterling (after currency conversion and the deduction of any bank charges). Our bank details can be found on the reverse of your invoice or in the sale catalogue under 'Important Notices'

Debit cards drawn on a UK bank. There is no additional charge for purchases made with these cards. Debit cards drawn on an overseas bank or deferred debit cards will be subject to a 3% surcharge.

Sterling cash payments of up to £8,000 and debit cards payments can be made at the Cashier's Office, either during or after the sale.
- 12. Collection and storage.** Please note what the Conditions of Sale state about collection and storage. It is important that goods are paid for and collected promptly. Any delay may involve the buyer in paying storage charges.
- 13. Droit de suite royalty charges.** From 14th February 2006 all UK art market professionals (which includes, but is not limited to; auctioneers, dealers, galleries, agents and other intermediaries) are required to collect a royalty payment for all works of art that have been produced by living artists. This payment is only calculated on qualifying works of art which are sold for a hammer price more than the UK sterling equivalent of EURO 1,000 – the UK sterling equivalent will fluctuate in line with prevailing exchange rates.

It is entirely the responsibility of the buyer to acquaint himself with the precise EURO to UK Sterling exchange rate on the day of the sale in this regard, and the auctioneer accepts no responsibility whatsoever if the qualifying rate is different to the rate indicated.

All items in this catalogue that are marked with **δ** are potentially qualifying items, and the royalty charge will be applied if the hammer price achieved is more than the UK sterling equivalent of EURO 1,000. The royalty charge will be added to all relevant buyers' invoices, and must be paid before items can be cleared. All royalty charges are passed on to the Design and Artists Copyright Society ('DACS'), no handling costs or additional fees with respect to these charges will be retained by the auctioneers.

The royalty charge that will be applied to qualifying items which achieve a hammer price of more than the UK sterling equivalent of EURO 1,000, but less than the UK sterling equivalent of EURO 50,000 is 4%. For qualifying items that sell for more than the UK sterling equivalent of EURO 50,000 a sliding scale of royalty charges will apply – for a complete list of the royalty charges and threshold levels, please see www.dacs.org.uk. There is no VAT payable on this royalty charge.

TERMS OF CONSIGNMENT FOR SELLERS

1. **Interpretation.** In these Terms the words 'you', 'yours', etc. refer to the Seller and if the consignment of goods to us is made by an agent we assume that the Seller has authorised the consignment and that the consignor has the Seller's authority to contract. Similarly the words 'we', 'us', etc. refer to the Auctioneers.
2. **Commission** is charged to sellers at the following rates:- please enquire at our salerooms.
3. **Removal costs.** Items for sale must be consigned to the sale room by any stated deadline and at your expense. We may be able to assist you with this process but any liability incurred to a carrier for haulage charges is solely your responsibility.
4. **Loss and damage of goods.**
 - (a) Loss and Damage Warranty - Dreweatts is not authorised by the FSA to provide insurance to its clients, and does not do so. However Dreweatts for its own protection, assumes liability for property consigned to it at the lower pre-sale estimate until the hammer falls. To justify accepting liability, Dreweatts makes a charge of 1.5% of the hammer price plus VAT, subject to a minimum charge of £1.50, or if unsold 1.5% of our lower estimate. The liability assumed by Dreweatts shall be limited to the lower pre-sale estimate or the hammer price if the lot is sold.
 - (b) If the owner of the goods consigned instructs us in writing not to take such action, the goods then remain entirely at the owners risk unless and until the property in them passes to the Buyer or they are collected by or on behalf of the owner, and clause 4 (a) is inapplicable
5. **Illustrations.** The cost of any illustrations is borne by you. If we consider that the Lot should be illustrated your permission will be asked first. The copyright in respect of such illustrations shall be the property of us, the auctioneers, as is the text of the catalogue.
6. **Minimum bids and our discretion.** Goods will normally be offered subject to a reserve agreed between us before the sale in accordance with clause 7. We may sell Lots below the reserve provided we account to you for the same sale proceeds as you would have received had the reserve been the hammer price. If you specifically give us a "discretion" we may accept a bid of up to 10% below the formal reserve.
7. **Reserves.**
 - (a) You are entitled to place prior to the auction a reserve on any lot consigned, being the minimum hammer price at which that lot may be sold. Reserves must be reasonable and we may decline to offer goods which in our opinion would be subject to an unreasonably high reserve (in which case goods carry the storage and insurance charges stipulated in these Terms of Consignment).
 - (b) A reserve once set cannot be changed except with our consent.
 - (c) Where a reserve has been placed only we may bid on your behalf and only up to the reserve (if any) and you may in no circumstances bid personally.
8. **Electrical items.** These are subject to detailed statutory safety controls. Where such items are accepted for sale you accept responsibility for the cost of testing by external contractors. Goods not certified as safe by an electrician (unless antiques) will not be accepted for sale. They must be removed at your expense on your being notified. We reserve the right to dispose of unsafe goods as refuse, at your expense.
9. **Soft furnishings.** The sale of soft furnishings is strictly regulated by statute law in the interests of fire safety. Goods found to infringe safety regulations will not be offered and must be removed at your expense. We reserve the right to dispose of unsafe goods as refuse, at your expense.

The rights of disposal referred to in clause 8 and 9 are subject to the provisions of The Torts (Interference with Goods) Act 1977, Schedule 1, a copy of which is available for inspection on request

10. **Descriptions.** Please assist us with accurate information as to the provenance etc. of goods where this is relevant. There is strict liability for the accuracy of descriptions under modern consumer legislation and in some circumstances responsibility lies with sellers if inaccuracies occur. We will assume that you have approved the catalogue description of your lots unless informed to the contrary. Where we are obliged to return the price to the buyer when the lot is a deliberate forgery under Condition 15 of the Conditions of Sale and we have accounted to you for the proceeds of sale you agree to reimburse us the sale proceeds.
11. **Unsold and withdrawn items.** If an item is unsold it may with your consent be re-offered at a future sale. Where in our opinion an item is unsaleable you must collect such items from the saleroom promptly on being so informed. Otherwise, storage charges may be incurred. We reserve the right to charge for storage in these circumstances at a reasonable daily rate.
12. **Withdrawn and bought in items.** These are liable to incur a charge of 15% plus VAT on being bought in or withdrawn after being catalogued.
13. **Conditions of Sale.** You agree that all goods will be sold on our Conditions of Sale. In particular you undertake that you have the right to sell the goods either as owner or agent for the owner. You undertake to compensate us and any buyer or third party for all losses liabilities and expenses incurred in respect of and as a result of any breach of this undertaking. We will also, at our discretion, and as far as practicable, confirm that an item consigned for sale does not appear on the Art Loss register, which is administered by an independent third party.
14. **Authority to deduct commission and expenses and retain premium and interest.**
 - (a) You authorise us to deduct commission at the stated rate and all expenses incurred for your account from the hammer price and consent to our right to retain beneficially the premium paid by the buyer in accordance with our Conditions of Sale and any interest earned on the sale proceeds until the date of settlement.
 - (b) You authorise us in our discretion to negotiate a sale by private treaty not later than the close of business 48 hours after the day of sale in the case of lots unsold at auction, in which case the same charges will be payable as if such lots had been sold at auction and so far as appropriate these Terms apply.
15. **Warehousing.** We disclaim all liability for goods delivered to our saleroom without sufficient sale instructions and reserve the right to make minimum warehousing charge of £10 per lot per day. Unsold lots are subject to the same charges if you do not remove them within a reasonable time of notification. If not removed within three weeks we reserve the right to sell them and defray charges from any net proceeds of sale or at your expense to consign them to the local authority for disposal.
16. **Settlement.** After sale settlement of the net sum due to you normally takes place within 28 days of the sale (by crossed cheque to the seller) unless the buyer has not paid for the goods. In this case no settlement will then be made but we will take your instructions in the light of our Conditions of Sale. You authorise any sums owed by you to us on other transactions to be deducted from the sale proceeds. You must note the liability to reimburse the proceeds of sale to us as under the circumstances provided for in Condition 10 above. You should therefore bear this potential liability in mind before parting with the proceeds of sale until the expiry of 28 days from the date of sale.

CONDITIONS OF SALE

Dreweatts 1759 Limited trading as Dreweatts carries on business with bidders, buyers and all those present in the auction room prior to or in connection with a sale on the following General Conditions and on such other terms, conditions and notices as may be referred to herein.

1. Definitions

In these Conditions:

- (a) "auctioneer" means the firm of Dreweatts or its authorised auctioneer, as appropriate;
- (b) "deliberate forgery" means an imitation made with the intention of deceiving as to authorship, origin, date, age, period, culture or source but which is unequivocally described in the catalogue as being the work of a particular creator and which at the date of the sale had a value materially less than it would have had if it had been in accordance with the description;
- (c) "hammer price" means the level of bidding reached (at or above any reserve) when the auctioneer brings down the hammer;
- (d) "terms of consignment" means the stipulated terms and rates of commission on which Dreweatts accepts instructions from sellers or their agents;
- (e) "total amount due" means the hammer price in respect of the lot sold together with any premium, Value Added Tax chargeable and any additional charges payable by a defaulting buyer under these Conditions;
- (f) "sale proceeds" means the net amount due to the seller, being the hammer price of the lot sold less commission at the stated rate, Value Added Tax chargeable and any other amounts due to us by the seller in whatever capacity and however arising;
- (g) "You", "Your", etc. refer to the buyer as identified in Condition 2.
- (h) The singular includes the plural and vice versa as appropriate.

2. Bidding procedures and the Buyer

- (a) Bidders are required to register their particulars before bidding and to satisfy any security arrangements before entering the auction room to view or bid;
- (b) the maker of the highest bid accepted by the auctioneer conducting the sale shall be the buyer at the hammer price and any dispute about a bid shall be settled at the auctioneer's absolute discretion by reoffering the Lot during the course of the auction or otherwise. The auctioneer shall act reasonably in exercising this discretion.
- (c) Bidders shall be deemed to act as principals.
- (d) Our right to bid on behalf of the seller is expressly reserved up to the amount of any reserve and the right to refuse any bid is also reserved.

3. Increments

Bidding increments shall be at the auctioneer's sole discretion.

4. The purchase price

together with a premium thereon of 26.4% which shall include VAT on the premium at the rate imposed by law. The buyer will also be liable for any royalties payable under Droit de Suite as set out under Information for Buyers above.

5. Value Added Tax

Value Added Tax on the hammer price is imposed by law on all items affixed with an asterisk or double asterisk. Value Added Tax is charged at the appropriate rate prevailing by law at the date of sale and is payable by buyers of relevant Lots. (Please refer to "Information for Buyers" for a brief explanation of the VAT position).

6. Payment

- (1) Immediately a Lot is sold you will:
 - (a) give to us, if requested, proof of identity, and
 - (b) pay to us the total amount due or in such other way as is agreed by us.
- (2) Any payments by you to us may be applied by us towards any sums owing from you to us on any account whatever without regard to any directions of you or your agent, whether express or implied.
- (3) Buyers who utilise the services of ATG Live Auctions or any other live internet services are hereby informed that the payment method details that are provided to ATG Live Auctions or any other live internet services as part of the process of registration will, in the absence of compliance with paragraph (1) of this clause, be utilised by us to settle any amounts owing by such buyers to us.

7. Title and collection of purchases

- (1) The ownership of any Lots purchased shall not pass to you until you have made payment in full to us of the total amount due.
- (2) You shall at your own risk and expense take away any lots that you have purchased and paid for not later than 3 working days following the day of the auction or upon the clearance of any cheque used for payment after which you shall be responsible for any removal, storage and insurance charges.
- (3) No purchase can be claimed or removed until it has been paid for.
- (4) Dreweatts is unable to arrange packaging or shipping of items. Successful buyers must make these arrangements independently, though the saleroom may be able to suggest specialist shipping companies who can advise buyers, this advice is not a recommendation and the saleroom is not liable for any aspect of the packaging and shipping process. Please note that the cost of packaging and shipping depends on the size/weight of the item(s) purchased, insurance requirements, and the shipping destination, not on the value of the item(s) purchased. Please note that any items not collected within one week of the sale date may be automatically removed to commercial storage and subject to a storage charge.

8. Remedies for non-payment or failure to collect purchases

- (1) If any Lot is not paid for in full and taken away in accordance with these Conditions or if there is any other breach of these Conditions, we, as agent for the seller and on our own behalf, shall at our absolute discretion and without prejudice to any other rights we may have, be entitled to exercise one or more of the following rights and remedies:
 - (a) to proceed against you for damages for breach of contract;
 - (b) to rescind the sale of that Lot and/or any other Lots sold by us to you;
 - (c) to resell the Lot (by auction or private treaty) in which case you shall be responsible for any resulting deficiency in the total amount due (after crediting any part payment and adding any resale costs). Any surplus so arising shall belong to the seller;
 - (d) to remove, store and insure the Lot at your expense and, in the case of storage, either at our premises or elsewhere;

- (e) to charge interest at a rate not exceeding 1.5% per month on the total amount due to the extent it remains unpaid for more than 3 working days after the sale;
 - (g) to retain that or any other Lot sold to you until you pay the total amount due;
 - (h) to reject or ignore bids from you or your agent at future auctions or to impose conditions before any such bids shall be accepted;
 - (i) to apply any proceeds of sale of other Lots due or in future becoming due to you towards the settlement of the total amount due and to exercise a lien (that is a right to retain possession of) any of your property in our possession for any purpose until the debt due is satisfied.
- (2) We shall, as agent for the seller and on our own behalf pursue these rights and remedies only so far as is reasonable to make appropriate recovery in respect of breach of these conditions

9. Third party liability

All members of the public on our premises are there at their own risk and must note the lay-out of the accommodation and security arrangements. Accordingly neither the auctioneer nor our employees or agents shall incur liability for death or personal injury (except as required by law by reason of our negligence) or similarly for the safety of the property of persons visiting prior to or at a sale.

10. Commission bids

Whilst prospective buyers are strongly advised to attend the auction and are always responsible for any decision to bid for a particular Lot and shall be assumed to have carefully inspected and satisfied themselves as to its condition we will if so instructed clearly and in writing execute bids on their behalf. Neither the auctioneer nor our employees or agents shall be responsible for any failure to do so save where such failure is unreasonable.

Where two or more commission bids at the same level are recorded we reserve the right in our absolute discretion to prefer the first bid so made.

11. Warranty of title and availability

The seller warrants to the auctioneer and you that the seller is the true owner of the property consigned or is properly authorised by the true owner to consign it for sale and is able to transfer good and marketable title to the property free from any third party claims.

12. Agency

The auctioneer normally acts as agent only and disclaims any responsibility for default by sellers or buyers.

13. Terms of sale

The seller acknowledges that Lots are sold subject to the stipulations of these Conditions in their entirety and on the Terms of Consignment as notified to the consignor at the time of the entry of the Lot.

14. Descriptions and condition

- (1) Whilst we seek to describe lots accurately, it may be impractical for us to carry out exhaustive due diligence on each lot. Prospective buyers are given ample opportunities to view and inspect before any sale and they (and any independent experts on their behalf) must satisfy themselves as to the accuracy of any description applied to a lot. Prospective buyers also bid on the understanding that, inevitably, representations or statements by us as to authorship, genuineness, origin, date, age, provenance, condition or estimated selling price involve matters of opinion. We undertake that any such opinion shall be honestly and reasonably held and accept liability for opinions given negligently or fraudulently. Subject to the foregoing neither we the auctioneer nor our employees or agents nor the seller accept liability for the correctness of such opinions and all conditions and warranties, whether relating to description, condition or quality of lots, express, implied or statutory, are hereby excluded. This Condition is subject to the next following Condition concerning deliberate forgeries and applies save as provided for in paragraph 6 "information to buyers".
- (2) Private treaty sales made under these Conditions are deemed to be sales by auction for purposes of consumer legislation.

15. Forgeries

Notwithstanding the preceding Condition, any Lot which proves to be a deliberate forgery (as defined) may be returned to us by you within 21 days of the auction provided it is in the same condition as when bought, and is accompanied by particulars identifying it from the relevant catalogue description and a written statement of defects. If we are satisfied from the evidence presented that the Lot is a deliberate forgery we shall refund the money paid by you for the Lot including any buyer's premium provided that (1) if the catalogue description reflected the accepted view of scholars and experts as at the date of sale or (2) you personally are not able to transfer a good and marketable title to us, you shall have no rights under this condition. The right of return provided by this Condition is additional to any right or remedy provided by law or by these Conditions of Sale.

General

16. We shall have the right at our discretion, to refuse admission to our premises or attendance at our auctions by any person.
17. (1) Any right to compensation for losses liabilities and expenses incurred in respect of and as a result of any breach of these Conditions and any exclusions provided by them shall be available to the seller and/or the auctioneer as appropriate.
 - (2). Such rights and exclusions shall extend to and be deemed to be for the benefit of employees and agents of the seller and/or the auctioneer who may themselves enforce them.
18. Any notice to any buyer, seller, bidder or viewer may be given by first class mail, email or Swiftmail in which case it shall be deemed to have been received by the addressee 48 hours after posting.
19. Special terms may be used in catalogue descriptions of particular classes of items in which case the descriptions must be interpreted in accordance with any glossary appearing at the commencement of the catalogue.
20. Any indulgence extended to bidders buyers or sellers by us notwithstanding the strict terms of these Conditions or of the Terms of Consignment shall affect the position at the relevant time only and in respect of that particular concession only; in all other respects these Conditions shall be construed as having full force and effect.
21. English law applies to the interpretation of these Conditions.

FURNITURE AND WORKS OF ART

Wednesday 26th January 2011 Sale Code: 13375

I authorise Dreweatts - Donnington Priory Salerooms, to bid on my behalf up to the maximum price indicated plus the 22% plus VAT (26.4%) Buyer's Premium

To aid legibility please fill in your details in BLOCK CAPITALS.

Title _____ Initials _____ Surname _____
 Address _____
 _____ Postcode _____
 Tel (Day) _____ Fax _____
 Mobile _____ Email _____
 Signed _____
 Date _____

Whilst every care is taken in carrying out buyers' instructions, neither Dreweatts, nor their staff can be held responsible for any errors made.

All successful bids are subject to a 22% plus VAT (26.4%) of the hammer price up to £250,000, and 12% plus VAT (14.40%) on the hammer price in excess of £250,000

Payment will be accepted, if you are a successful bidder, by debit card issued by a UK bank, in cash (subject to relevant money laundering regulations), by bank transfer or by all major UK issued credit cards with the exception of American Express and Diners Club.

A surcharge of 3% is payable on all payments made by credit card. This surcharge does not apply to debit card payments. Payment may also be made by Sterling personal cheques drawn on a UK bank account but Dreweatts regrets that purchases paid for by this method can not be collected until your cheque has cleared.

If you leave an odd bid, the Auctioneer will increase your bid to the next highest figure.

Bids must be received the day before the sale, in certain circumstances it may not be possible to execute bids received on the day of the sale.

Your attention is drawn to our General Conditions of Sale, available in the catalogue or in the saleroom.

COMMISSION BIDDING SLIP

Lot No.	Max. Bid Price (£) Ex.Premium & VAT	Lot No.	Max. Bid Price (£) Ex.Premium & VAT
_____	_____	_____	_____
_____	_____	_____	_____
_____	_____	_____	_____
_____	_____	_____	_____
_____	_____	_____	_____
_____	_____	_____	_____
_____	_____	_____	_____
_____	_____	_____	_____
_____	_____	_____	_____
_____	_____	_____	_____
_____	_____	_____	_____
_____	_____	_____	_____
_____	_____	_____	_____
_____	_____	_____	_____
_____	_____	_____	_____
_____	_____	_____	_____
_____	_____	_____	_____
_____	_____	_____	_____
_____	_____	_____	_____
_____	_____	_____	_____
_____	_____	_____	_____
_____	_____	_____	_____

Please send to:
Dreweatts
 Donnington Priory Salerooms
 Newbury, Berkshire RG14 2JE
 Tel: +44 (0) 1635 553553
 Fax: +44 (0) 1635 553599
 www.dnfa.com





Sales Calendar

JANUARY-MARCH 2011

JANUARY

6th	Gallery Sale	Bristol, Baynton Road
13th	Bibliophile	Godalming
18th	Collectors Sale	Bristol, Apsley Road
19th	Asian Ceramics & Works of Art	Donnington Priory
20th	Visual Arts, including Posters	London
20th	Gallery Sale	Bristol, Baynton Road
26th	Antique Furniture & Works of Art	Donnington Priory
27th	Fine Wine, Port & Champagne	Donnington Priory
27th	Books	London

FEBRUARY

1st	Vintage Fashion	Bristol, Apsley Road
3rd	Gallery Sale	Bristol, Baynton Road
10th	Bibliophile	Godalming
15th	Jewellery, Silver, Watches & Coins	Bristol, Apsley Road
16th	Clocks & Scientific Instruments	Donnington Priory
17th	Modern Prints	London
17th	Gallery Sale	Bristol, Baynton Road
23rd	Traditional Pictures	Donnington Priory
24th	Travel & Maps	London

MARCH

2nd	European Ceramics & Decorative Arts	Donnington Priory
3rd	Gallery Sale	Bristol, Baynton Road
9th	Fine Silver, Jewellery & Watches	Donnington Priory
10th	Bibliophile	Godalming
15th	Transport Sale	Bristol, Apsley Road
16th	Antique Furniture & Works of Art	Donnington Priory
16th	Silver, Jewellery & Watches	Godalming
17th	Prints & Oils	London
17th	Gallery Sale	Bristol, Baynton Road
23rd	Fine Wine, Port & Champagne	Donnington Priory
24th	Cookery & Natural History Books	London
29th	Arms, Medals & Militaria	Bristol, Apsley Road
31st	Gallery Sale	Bristol, Baynton Road

DONNINGTON Donnington Priory Salerooms
Newbury, Berkshire RG14 JE

Tel: +44 (0) 1635 553553
Fax: +44 (0) 1635 553599
donnington@dnfa.com

BRISTOL, Apsley Road
St. John's Place
Apsley Road, Clifton
Bristol BS8 2ST

Tel: +44 (0) 117 972 7201
Fax: +44 (0) 117 973 5671
bristol@dnfa.com

BRISTOL, Baynton Road
Baynton Road Salerooms
Baynton Road, Ashton
Bristol BS3 2EB

Tel: +44 (0) 117 953 1603
Fax: +44 (0) 0117 953 1598
bristol@dnfa.com

GODALMING

Baverstock House
93 High Street, Godalming
Surrey GU7 1AL

Tel: +44 (0) 1483 423567
Fax: +44 (0) 1483 426392
godalming@dnfa.com

LONDON

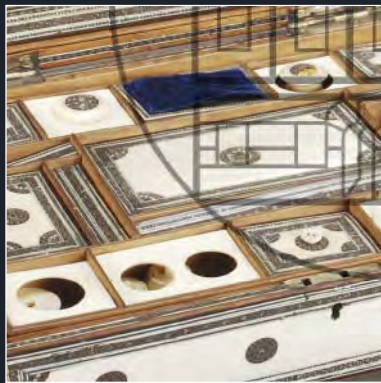
Bloomsbury House
24 Maddox Street
London W1S 1PP

Tel: +44 (0) 20 7495 9494
Fax: +44 (0) 20 7495 9499
info@bloomsburyauctions.com

Dreweatts¹⁷⁵⁹



AUCTIONS
BLOOMSBURY



Dreweatts

Donnington Priory Salerooms, Newbury, Berkshire RG14 2JE

T +44 (0) 1635 553 553 | donnington@dnfa.com

www.dnfa.com